

THE QUARTERLY JOURNAL OF ECONOMICS

Vol. 128

August 2013

Issue 3

WORKPLACE HETEROGENEITY AND THE RISE OF WEST GERMAN WAGE INEQUALITY*

DAVID CARD
JÖRG HEINING
PATRICK KLINE

We study the role of establishment-specific wage premiums in generating recent increases in West German wage inequality. Models with additive fixed effects for workers and establishments are fit into four subintervals spanning the period from 1985 to 2009. We show that these models provide a good approximation to the wage structure and can explain nearly all of the dramatic rise in West German wage inequality. Our estimates suggest that the increasing dispersion of West German wages has arisen from a combination of rising heterogeneity between workers, rising dispersion in the wage premiums at different establishments, and increasing assortativeness in the assignment of workers to plants. In contrast, the idiosyncratic job-match component of wage variation is small and stable over time. Decomposing changes in mean wages between different education groups, occupations, and industries, we find that increasing plant-level heterogeneity and rising assortativeness in the assignment of workers to establishments explain a large share of the rise in inequality along all three dimensions. *JEL* Codes: J00, J31, J40.

* We thank the Berkeley Center for Equitable Growth for funding support. We are grateful to the IAB and Stefan Bender for assistance in making this project possible and to Karl Schmidt, Robert Jentsch, Cerstin Erler, and Ali Athmani for invaluable assistance in running our programs at the IAB. We also thank Christian Dustmann, Bernd Fitzenberger, and seminar participants at EUI Florence, Yale, Stanford, and the NBER Labor Studies meetings for many helpful comments and suggestions. Robert Heimbach, Hedvig Horvath, and Michele Weynandt provided excellent research assistance.

© The Author(s) 2013. Published by Oxford University Press, on behalf of President and Fellows of Harvard College. All rights reserved. For Permissions, please email: journals.permissions@oup.com

The Quarterly Journal of Economics (2013), 967–1015. doi:10.1093/qje/qjt006.

Advance Access publication on May 16, 2013.

I. INTRODUCTION

Wage inequality has risen in many countries, attracting the sustained attention of policy makers and the general public (see Katz and Autor 1999; Acemoglu and Autor 2011 for detailed reviews). Most existing studies explain the rise in inequality as a consequence of supply and demand factors that have expanded the productivity gap between high- and low-skilled workers (e.g., Katz and Murphy 1992; Bound and Johnson 1992; Juhn, Murphy, and Pierce 1993; Goldin and Katz 2008). Economists have long recognized, however, that some firms pay higher wages than others for equally skilled workers (e.g., Slichter 1950; Rees and Schultz 1970; Krueger and Summers 1988; Van Reenen 1996). The magnitude of this workplace component of wage inequality is explored in several recent publications, including Abowd, Kramarz, and Margolis (1999), Goux and Maurin (1999), Abowd, Creecy, and Kramarz (2002), Gruetter and Lalive (2009), and Holzer et al. (2011).¹ Virtually all these studies find significant employer-specific wage differentials. To date, however, there is little evidence on whether these differentials have widened over time, and if so whether they can help explain the rise in cross-sectional wage inequality.²

In this article we use detailed administrative data from West Germany to study trends in the dispersion of the workplace-specific wage premiums earned by individuals on different jobs and measure the contribution of workplace heterogeneity to the rise in inequality. Wage inequality has widened substantially in Germany over the past two decades (see Dustmann, Ludsteck, and Schönberg 2009). Figure I, for example, shows the evolution of various real wage percentiles for full-time male workers in West Germany, indexed to a base of 1996.³ Over the 13-year

1. An earlier generation of studies (e.g., Davis and Haltiwanger 1991; Groshen 1991; Bernard and Jensen 1995) documented substantial between-plant variation in wages but was unable to deal fully with nonrandom assignment of workers to firms.

2. Barth et al. (2011) find that between-plant inequality has grown over time in the United States but are unable to fully account for changes in the pattern of sorting of workers to firms due to limitations in their data. Cardoso (1997, 1999) provides evidence that between plant wage variation grew in Portugal but is again unable to fully account for selection of workers into firms based on unobservables. Skans, Edin, and Holmlund (2009) provide similar between-plant evidence for Sweden.

3. The data underlying this figure are described in detail in Section III.

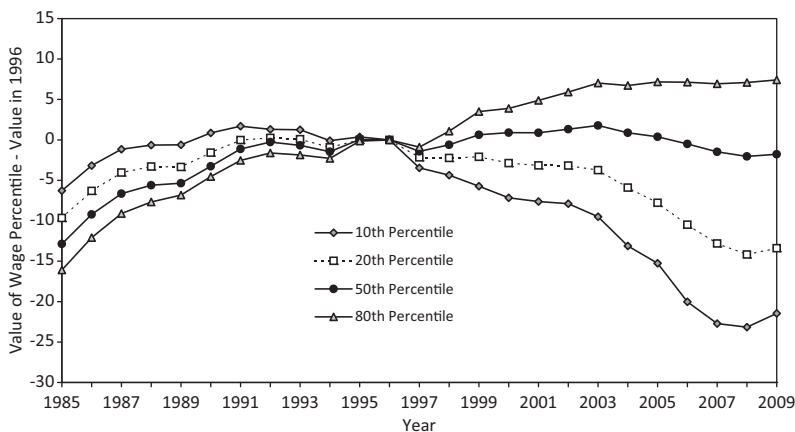


FIGURE I

Trends in Percentiles of Real Log Daily Wages for West German Men

Figure shows percentiles of log real daily wage for full-time male workers on their main job, deviated from value of same percentile in 1996 and multiplied by 100.

period from 1996 to 2009, the gap between the 20th and 80th percentiles of wages expanded by approximately 20 log points, roughly comparable to the rise in inequality in the U.S. labor market over the 1980s.⁴

The German labor market presents an important test case for assessing changes in wage-setting behavior and the role of firm-specific heterogeneity. After a decade or more of disappointing economic performance (Siebert 1997), the country implemented a series of labor market reforms in the late 1990s and early 2000s, and has recently emerged as one of the most successful economies in the Organisation for Economic Co-operation and Development.⁵ There is widespread interest in the sources of this recent success and the lessons it may hold for other countries.

To separately identify the impact of rising heterogeneity in pay across different workers and rising heterogeneity in the pay received by the same individual on different jobs, we divide the

4. For example, Katz and Murphy (1992) show that the 90–10 gap in log weekly wages for full-time male workers rose by 0.18 between 1979 and 1987, and Autor, Katz, and Kearney (2008) show that the 90–10 gap in log weekly wages for full-time full-year male workers rose by 0.25 between 1979 and 1992.

5. For overviews of recent changes in the German labor market, see Eichhorst and Marx (2009), Burda and Hunt (2011), and Eichhorst (2012).

period between 1985 and 2009 into four overlapping intervals and fit separate linear models in each interval with additive person and establishment fixed effects, as in Abowd, Kramarz, and Margolis (1999; henceforth AKM). We then compare the estimates of the person and establishment effects across intervals to decompose changes in the structure of wages.

In an initial methodological contribution we present new evidence on the quality of the approximation to the wage structure provided by AKM's additive worker and firm effects specification. We show that the strong separability assumptions of the AKM model are nearly (but not perfectly) met in the data. In particular, generalized nonseparable models with fixed effects for each job yield only a small improvement in explanatory power relative to the AKM specification, both within narrow time intervals and between intervals. We also check for patterns of endogenous mobility that could lead to systematic biases in the AKM specification and find little evidence of such patterns.

Our main substantive contribution is a simple decomposition of the rise in wage inequality among full-time male workers in West Germany. We find that the increase is attributable to increases in the dispersion of both the person-specific and workplace-specific components of pay, coupled with a rise in the assortativeness of job matching that magnifies their joint effect.⁶ Overall, the rise in the variance of the person component of pay contributes about 40% of the overall rise in the variance of wages, the rise in the establishment component contributes around 25%, and their rising covariance contributes about a third. We find qualitatively similar results for full-time female workers.

We go on to use our estimated models to decompose the rise in between-group inequality across different education, occupation, and industry groups. We find that two-thirds of the increase in the pay gap between higher- and lower-educated workers is attributable to a widening in the average workplace pay premiums received by different education groups. Increasing workplace heterogeneity and rising assortativeness between high-wage

6. Recent contributions by Andersson et al. (2012) and Bagger, Sorensen, and Vejlin (2012) also document increases in assortative matching between workers and employers. Those studies use related statistical methods but assume that person and establishment effects are stationary over the entire sample period.

workers and high-wage firms likewise explain over 60% of the growth in inequality across occupations and industries.

Finally, we investigate two potential channels for the rise in workplace-specific wage premiums: establishment age and collective bargaining status. Classifying establishments by entry year, we find a trend toward increasing heterogeneity among establishments that entered the labor market after the mid-1990s, coupled with relatively small changes in the dispersion of the premiums paid by continuing establishments. The relative inequality among newer establishments is linked to their collective bargaining status: an increasing share of these establishments have opted out of the traditional sectoral contracting system and pay relatively low wages. These patterns suggest that rising wage inequality in West Germany is related to institutional changes in the wage-setting process, though the underlying source of these coincident trends is less clear.

II. BACKGROUND: MACRO TRENDS AND INSTITUTIONAL CHANGES

As background for our empirical analysis, this section briefly summarizes some of the major changes that have affected the West German labor market since the early 1980s. Two critical events were the collapse of the Soviet empire and the reunification of East and West Germany.⁷ An immediate consequence of these political developments was massive in-migration to West Germany. Approximately 1.7 million former residents of East Germany moved to the west in the early 1990s (see Burda 1993 and Wolff 2009). Even more ethnic Germans (approximately 2.8 million people) arrived from Russia and the former Eastern Bloc countries during the 1990s (Bauer and Zimmermann 1999). These new migrants—many of whom lacked modern training and language skills—contributed to the rise in unemployment in West Germany (Glitz 2012) and the build-up of pressure for labor market reform.

More subtly, the decision to impose West German wage scales on the less productive East led to fissures in the traditional

7. These processes began in the late 1980s and ended in the early 1990s. The Berlin wall fell in November 1989. Economic reunification was achieved in spring 1990 with the elimination of the East German mark in June of that year. The country was officially reunified in October 1990.

collective bargaining system (Burda 2000). Until the 1990s most West German firms accepted the provisions of the major sectoral agreements negotiated between employer associations and large unions. These pay scales proved to be far too high for East German firms, however, leading to massive defections from the system—a process that is allowable under German law (see Ochel 2003). Eventually the defections spilled over to the West, prompting a sharp decline in the fraction of employees covered by collective agreements. For example, data presented by Kohaut and Ellguth (2008) and Ellguth, Gerner, and Stegmaier (2012) show a fall in collective bargaining coverage in West Germany from 83% in 1995 to 63% in 2007.⁸

A second and related phenomenon is the adoption of “opt-out” or “opening” clauses by firms that have remained part of the sector-level agreement (e.g., Hassel and Rehder 2001; Heinbach 2006). Originally intended for firms in the East, these clauses allow individual plants to depart from the agreement, typically in response to the threat of closure or job loss.⁹ A study by Hassel and Rehder (2001) suggests that about one-half of the top 120 firms in West Germany had signed opening clauses by 2000 and about 43% of their employees were covered by these pacts.¹⁰

By the mid-1990s the unemployment rate in Germany had risen to nearly 10%. Intensifying pressure for labor market reform led to the passage of the Labor Law Act for Promotion of Employment in October 1996. This law extended the maximum duration of fixed-term contracts, raised the establishment size threshold for dismissal protection, and reduced the replacement rate for sick leave pay. The trend toward liberalization was

8. As discussed by Fitzenberger, Kohn, and Lembcke (2013), not all workers in a given establishment necessarily have the same contractual coverage status. For example, managers and temporary workers (who are included in our data set) are exempt. The coverage rates in the text assign a single establishment status to all employees and should be interpreted carefully.

9. For example, the 1993 sectoral agreement in metalworking provided for an opening clause (or hardship clause) for plants in East Germany. As of the mid-1990s, the East German metalworking employer association estimated that 60% of plants were making use of the clause (EIRO 1997a). The 1997 sectoral agreement in the chemical industry in West Germany allowed for plant-specific wage cuts of up to 10% to save jobs (EIRO 1997b).

10. Many firms that recognize the sectoral contract also pay a wage premium *above* the sectoral minimum (see Jung and Schnabel 2009). We are not aware of any research that shows whether this so-called wage cushion component has become more or less variable over time.

partially reversed in 1999 with a law bringing “marginal jobs” (part-time jobs with low earnings) that were previously excluded from social security taxes into the tax system.¹¹ With the recession in 2001, however, pressures for reform reemerged, ultimately leading to adoption of the Hartz Reforms in 2003–2005. These lowered the generosity of benefits for exhaustees of regular unemployment benefits, while introducing subsidies for low-wage jobs (Jacobi and Kluve 2006). In addition, the employee portion of social security taxes for “mini-jobs” (jobs paying less than €400 a month) was eliminated, providing a further impetus for the expansion of part-time/low-wage work.

III. DATA

We use earnings records from the German social security system that have been assembled by the Institute for Employment Research into the Integrated Employment Biographies (IEB) data file (see Oberschachtsiek et al. 2009). These data include total earnings and days worked at each job in a year, as well as information on education, occupation, industry, and part-time or full-time status. With the exception of civil servants and self-employed workers, nearly all private sector employees in Germany are currently included in the IEB.

For our main analysis we focus on daily wages at full-time jobs held by men age 20–60. Because the IEB does not include hours of work, limiting attention to full-time jobs reduces the impact of hours dispersion that could confound trends in inequality.¹² Less than 7 percent of male workers in the IEB have no full-time job in a year, so the inclusion of wages for part-time men has only a small impact on the trends we study. As a check on our main conclusions, we present a parallel analysis for full-time female workers. A smaller majority of German women work full-time (e.g., only about 64% in 2000), raising potential concerns

11. The firm size threshold for dismissal protection was also raised back to 10 employees, and fixed-term contracts were limited to initial employment only (instead of being renewable).

12. A detailed analysis by Dustmann, Ludsteck, and Schönberg (2009, Appendix Table 7) of data from the German Socio-Economic Panel shows no change in the variance of hours among full-time male workers in West Germany after 1990, suggesting that hours variation is not a major source of the rise in wage dispersion we document.

about selectivity biases.¹³ Unfortunately, many part-time women work in mini-jobs that were not covered by social security until 1999, so it is difficult to study trends for part-time female workers using IEB data. The available data, however, suggest that general trends for all female workers are not too different from those for full-time women (see later discussion).

To construct our sample, we begin with the universe of full-time jobs held by workers age 20–60 in each year from 1985 to 2009. We exclude mini-jobs (which are only included after 1999) and jobs in which the employee is undergoing training. As explained in more detail in the Online Appendix, we sum the earnings received by a given individual from each establishment in each year and designate the one that paid the highest total amount as the main job for that year. Most full-time workers are employed at only one establishment in any year (the average is around 1.1 per year), and there is no trend in the number of jobs held per year, so we believe the restriction to one job per year is innocuous (see Online Appendix Table A.1). We calculate the average daily wage by dividing total earnings by the duration of the job spell (including weekends and holidays). An individual who has no full-time job in a given calendar year is assigned a missing wage for that year.

The establishment identifiers in the IEB are assigned for administrative purposes and may combine multiple work sites owned by the same firm if they are in the same industry and municipality. A new establishment identifier (EID) is issued whenever a plant changes ownership, so the “death” of an establishment identifier does not necessarily mean that the plant has closed, nor does the “birth” of a new EID necessarily mean that a new plant has opened.¹⁴ Although this makes it difficult to identify plant closings, for purposes of modeling wage determination we believe it is appropriate to treat an ownership change as a potential change in the workplace component of pay, even when

13. The relative size of the full-time female workforce has been relatively stable over the past 25 years, suggesting that the selectivity biases among full-time workers may be relatively constant. The rise in female employment rates since the mid-1990s in Germany has mainly occurred through an expansion of part-time employment.

14. Using clusters of worker flows between establishments, Schmieder and Hethy (2010) estimate that only about half of EID births and deaths in the IEB are true plant openings or closings.

TABLE I
SUMMARY STATISTICS FOR SAMPLES OF FULL-TIME MEN AND WOMEN

	Log real wage, unallocated			Log real wage, allocated		
	(1)	(2)	(3)	(4)	(5)	(6)
	Number observations	Mean	Std. dev.	Percent censored	Mean	Std. dev.
<i>Panel A. Full-time men</i>						
1985	11,980,159	4.221	0.387	10.63	4.247	0.429
1990	13,289,988	4.312	0.398	11.92	4.342	0.445
1995	13,101,809	4.340	0.415	9.78	4.361	0.447
2000	12,930,046	4.327	0.464	10.31	4.352	0.502
2005	11,857,526	4.310	0.519	9.36	4.336	0.562
2009	12,104,223	4.277	0.535	10.00	4.308	0.586
<i>Panel B. Full-time women</i>						
1985	6,068,863	3.836	0.462	1.52	3.840	0.470
1990	7,051,617	3.942	0.476	2.01	3.947	0.486
1995	7,030,596	4.026	0.483	1.95	4.030	0.491
2000	7,009,075	4.019	0.532	2.47	4.026	0.545
2005	6,343,006	3.999	0.573	2.36	4.006	0.588
2009	6,566,429	3.979	0.587	2.80	3.988	0.606

Notes. Samples includes employees in West Germany age 20–60, working full-time in nonmarginal jobs. Real wage is based on average daily earnings at the full-time job with highest total earnings during the calendar year, adjusted for inflation using the Consumer Price Index. Unallocated wage data in columns (2) and (3) are based on raw daily wage data, which are censored at social security maximum for the corresponding year. Allocated wage data in columns (5) and (6) include stochastic allocation of censored observations based on a Tobit model.

a plant remains open. A new owner, for example, may introduce a bonus system that alters the workplace component of pay. In cases where a new EID is assigned to a continuing plant, there is no bias in treating the “new” EID as a new establishment, only a potential loss in efficiency, because the old and new establishments can have the same impacts on wages.

Table I illustrates some basic characteristics of our wage data, showing information for every fifth year of the sample for men in the upper panel and women in the lower panel. The data set includes 12 to 14 million full-time male wage observations in any year, and 6 to 7 million full-time female wage observations. As shown in column (2) of the table, average real daily wages of full-time men rose by about 8% between 1985 and 1990, then were relatively stable over the next 20 years. Average real daily wages of full-time women rose by 11% between 1985 and 1990 and another 6% between 1990 and 1995, but then stabilized at a level

about 30 log points below the mean for men.¹⁵ The standard deviation of log wages for both gender groups rose slightly between 1985 and 1995, then surged over the next 15 years, rising by 12 log points for men and 10 log points for women from 1995 to 2009.

An important limitation of the IEB data is the censoring of earnings at the social security maximum. As shown in column (4) of Table II, 10% to 12% of male wage observations and 1% to 3% of female wage observations are censored in each year. To address the problem of censoring we follow Dustmann, Ludsteck, and Schönberg (2009) and use a series of Tobit models—fit separately by gender, year, education level (five categories), and age range (four 10-year ranges)—to stochastically impute the upper tail of the wage distribution. Because our primary interest is in models that include person and establishment effects, we develop an imputation procedure that captures the patterns of within-person and within-establishment dependence in the data. Specifically, our Tobit models for a given year include the worker's earnings and censoring rate in all other years, as well as the mean earnings and censoring rate of his or her coworkers in that year. Using the estimated parameters from these models, we replace each censored wage value with a random draw from the upper tail of the appropriate conditional wage distribution (see the Online Appendix for details).

The effect of this imputation procedure is illustrated in columns (5) and (6) of Table I, where we show the means and standard deviations of log daily wages after replacing censored observations with allocated values from the Tobit models. For women the means and standard deviations are only slightly higher than in columns (2) and (3), reflecting the relatively low censoring rates. For men, the allocation procedure matters more: on average the imputation raises the estimated mean log wage by 2.7 percentage points and the estimated standard deviation by 4.5 percentage points, with slightly larger effects in years with a higher censoring rate.

Although we believe that this imputation procedure works reasonably well, a natural concern is that our results—particularly for men—would be somewhat different if we used a different

15. See Anotnczyk, Fitzenberger, and Sommerfeld (2010) for further discussion of recent trends in male–female wage differences in Germany.

TABLE II
SUMMARY STATISTICS FOR OVERALL SAMPLE AND INDIVIDUALS IN LARGEST CONNECTED SET

Interval	All full-time men, age 20-60				Individuals in largest connected set			
	(1) Number person/yr. obs.	(2) Number individuals	(3) Mean	(4) Std. dev.	(5) Number person/yr. obs.	(6) Number individuals	(7) Mean	(8) Std. dev.
1985-1991	86,230,097	17,021,779	4.344	0.379	84,185,730	16,295,106	4.351	0.370
Ratio: largest connected/all					97.6	95.7	100.2	97.7
1990-1996	90,742,309	17,885,361	4.391	0.392	88,662,398	17,223,290	4.398	0.384
Ratio: largest connected/all					97.7	96.3	100.2	97.9
1996-2002	85,853,626	17,094,254	4.397	0.439	83,699,582	16,384,815	4.405	0.432
Ratio: largest connected/all					97.5	95.8	100.2	98.3
2002-2009	93,037,963	16,553,835	4.387	0.505	90,615,841	15,834,602	4.397	0.499
Ratio: largest connected/all					97.4	95.7	100.2	98.8
Change from first to last interval			0.043	0.126			0.045	0.128

Notes. Sample consists of full-time male workers ages 20-60 employed in nonmarginal jobs and not currently in training. Daily wage is imputed for censored observations using a Tobit model. "Connected set" refers to group of firms connected by worker mobility over the sample interval (for details, see Abowd, Creedy, and Kramarz 2002).

technique.¹⁶ To address this concern, we present robustness checks based on the subset of full-time male workers with apprenticeship training. This group, which includes about 60% of the German male workforce, has relatively low censoring rates. As we show later, our main conclusions are very similar when we use only the apprentice subsample.

IV. OVERVIEW OF TRENDS IN WAGE INEQUALITY

Figure II plots four measures of wage dispersion for full-time males: the standard deviation of log wages (including imputed wages for censored observations), the gap in log wages between the 80th and 20th percentiles, the gap between the 80th and 50th percentiles, and the gap between the 50th and 20th percentiles. To facilitate comparisons we normalize the gap measures by dividing by the corresponding percentile gaps of a standard normal variate.¹⁷ If log wages were normally distributed, the normalized gaps and the standard deviation would all be equal. Though this is evidently not the case, the *trends* in the standard deviation and the normalized gaps are quite similar. In particular, the standard deviation rose by 15 log points from 1985 to 2009, the (normalized) 80–20 gap rose by 16 log points, the 80–50 gap rose by 15 log points, and the 50–20 gap rose by 18 log points. Because the gap measures are unaffected by censoring, these similarities suggest that our imputation procedure does not lead to major biases in estimating the change in wage dispersion over time. Another notable feature of the data in Figure II is that the growth rates in all four measures of inequality increased in the mid-1990s. For example, the growth rate of

16. Dustmann, Ludsteck, and Schönberg (2009) present an extensive robustness analysis in which they evaluate several alternatives to their basic Tobit imputation models and conclude that they give similar results. We conducted our own validation exercise by taking data for younger men with apprenticeship training (who have censoring rates under 1%), artificially censoring the data at thresholds such that 10%, 20%, 30%, or 40% of the observations were censored, applying the same Tobit models used in our main analysis to these samples, imputing the upper tail observations in each sample, and then reestimating trends in the dispersion of wages. The results, summarized in the Online Appendix, suggest that use of imputed wages leads to a slight upward bias in the measured variance of wages in each year, but no bias in the measured trend in inequality.

17. For example, we divide the 80–20 gap by $\Phi^{-1}(0.8) - \Phi^{-1}(0.2) = 1.683$, where $\Phi(\cdot)$ represents the standard normal distribution function.

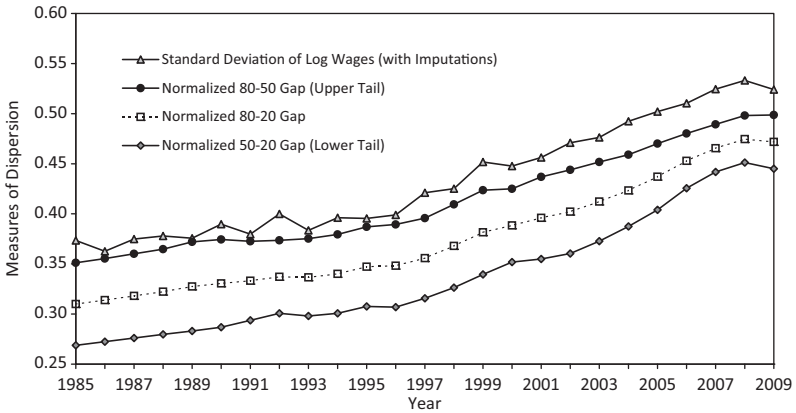


FIGURE II
Trends in Wage Inequality for Full-Time Male Workers

This figure shows measures of dispersion in real daily wage for full-time male workers. Normalized percentile gaps are differences in percentiles divided by corresponding differences in percentiles of standard normal variate.

the standard deviation of log wages increased from 0.23 log point a year in the 1985–96 period to 0.96 log point a year from 1996 to 2009.

Figure III compares the trend in the normalized 80–20 wage gap for full-time men with the trends for three other groups of workers: all men (i.e., full- and part-time), full-time women, and all women.¹⁸ As noted earlier, the fraction of male workers with no full-time job in a year is relatively low in West Germany (around 2% in 1985, and just under 7% in 2008), so the addition of part-time workers to the male sample has only a small effect on measured inequality. Wage inequality among full-time female workers is higher than among full-time men and rises a little less over our sample period, though the general trends for the two groups are quite similar. Inequality in daily wages for **all** regularly employed females (i.e., including all jobs except

18. For this analysis we use the Sample of Integrated Labor Market Biographies (SIAB), a 2% public use sample from the IEB (Dorner, König, and Seth 2011). We use the same procedures as for our IEB sample but do not impute wages for censored observations. Riphahn and Schnitzlein (2011) use the SIAB data to document trends in inequality for men and women together in West and East Germany. Their results for West Germany are very similar to ours. They show that wage inequality in East Germany has risen somewhat faster than in the West.

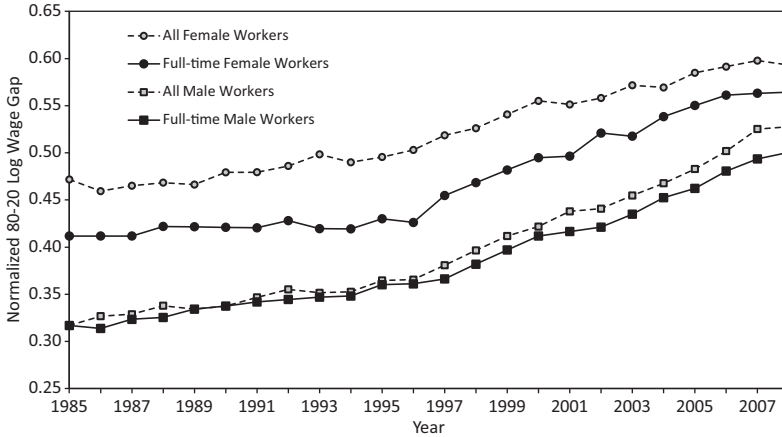


FIGURE III

Wage Inequality Trends for Alternative Samples of Workers

Based on tabulations of SIAB. Measured wage is average daily wage in job with highest total earnings in the year. Wage gap is the difference between the 80th percentile of log real wages and the 20th percentile, divided by 80–20 gap for a standard normal variate.

untaxed mini-jobs) is even higher, perhaps reflecting the variation in hours of work among part-timers, but rises more slowly than for full-time women or men. Even for the broadest sample of female workers, however, there is evidence of an acceleration in inequality in the mid-1990s. Given the broad similarity in trends across the various groups, we concentrate for the remainder of this section on full-time men. We return to consider full-time women in more detail in Section VI.

IV.A. Trends in Residual Wage Inequality

Starting with the seminal U.S. studies by Katz and Murphy (1992) and Bound and Johnson (1992), analysts have noted that a large share of recent rises in wage inequality have occurred *within* conventional skill groups. This is also true in West Germany, as we show in Figure IV, which plots the residual standard deviations of log wages from a series of linear regression models, each fit separately by year. As a point of departure the top line in the figure shows the trend in the unadjusted standard deviation of wages, which rises from 0.37 to 0.52 between 1985

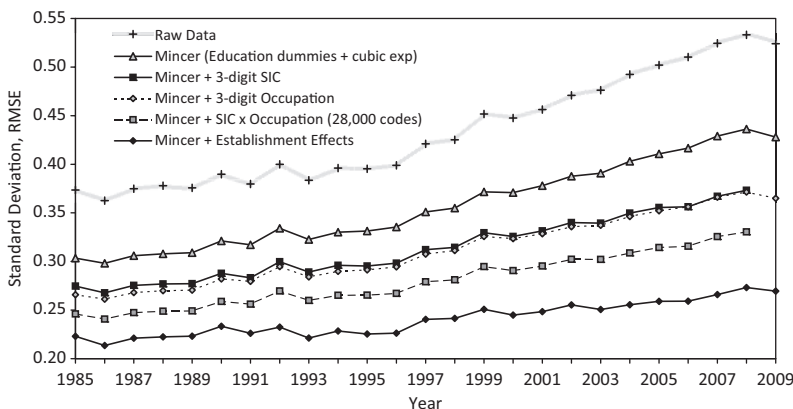


FIGURE IV

Raw and Residual Standard Deviations from Alternative Wage Models

See note to Figure II. Figure shows measures of dispersion in actual and residual real daily wage for full-time male workers. Residual wage is residual from linear regression model. “Mincer” refers to model with dummies for education categories and cubic in experience, fit separately in each year. Other models add controls as indicated.

and 2009. The second line in the figure is the standard deviation of the residuals from a standard Mincerian earnings function (with dummies for four education levels and a cubic experience term) fit separately by year. Residual inequality rises a little less than overall wage inequality (from 0.30 in 1985 to 0.43 in 2009), but exhibits the same shift in trend in the mid-1990s.

Several recent studies have suggested that part of the rise in U.S. wage inequality is attributable to a rise in the variation in wages across industries (e.g., Bernard and Jensen 1995) and/or occupations (e.g., Autor, Levy, and Murnane 2003; Autor, Katz, and Kearney 2008). The third, fourth, and fifth lines in the figure show the trends in the residual standard deviation of wages after controlling for industry (~300 dummies with separate coefficients in each year), occupation (~340 dummies), and industry × occupation (~28,000 dummies). While time-varying industry and occupation controls clearly add to the explanatory power of a standard wage equation, they have only a modest impact on the trend in residual inequality.¹⁹ We return in Section VI to examine

19. A basic human capital model (dummies for education and cubic in experience) has an R^2 coefficient of about 0.35. Adding industry or occupation controls

trends in between-occupation and between-industry inequality in light of our econometric decomposition of wage inequality into person and establishment effects.

In contrast to the rather modest effect of industry and occupation controls, the bottom line in Figure IV shows that adding dummies for each establishment (with year-specific coefficients) has a sizable impact on the trend in inequality. Within-plant inequality, as measured by the residual standard error of the regression model rises by only 0.05 between 1985 and 2009, compared to the 0.13 rise for the baseline model that controls for education and experience. This contrast suggests that rising heterogeneity in wages offered by different employers may explain some of the rise in German wage inequality. We caution, however, that nonrandom sorting of workers to establishments makes it very hard to interpret the estimates from wage models with establishment effects but no controls for unobserved worker skills. Even if there are no workplace-specific wage premiums, one could still observe significant and increasingly important establishment effects if workers at the same establishment have similar unobserved abilities and the returns to these abilities are rising over time, or if the degree of sorting across establishments is rising.

To study trends in workplace sorting, we developed two indices that are described at greater length in an earlier version of this article (Card, Heining, and Kline 2012). The first is an index of educational sorting based on the coefficient from a regression of the mean level of schooling at worker i 's establishment in year t on his own schooling measured in that year. As noted by Kremer and Maskin (1996), this coefficient can range from 0 (no sorting) to 1 (perfect sorting). The value of the index for full-time male workers increases steadily, from 0.34 in 1985 to 0.47 in 2009.

Our second measure of sorting examines the degree of occupational segregation across workplaces. Specifically, we divide three-digit occupations into 10 equally sized groups, based on mean wages in each occupation during the period 1985–1991. We then compute Theil indices of segregation for the decile

raises the R^2 to about 0.50. Adding the interaction of occupation and industry raises it to about 0.60. In an earlier draft (Card, Heining, and Kline 2012) we also presented specifications that control for federal state. However, there is little change in mean wages across states, so these controls add very little to the basic Mincer specification.

groups across establishments in each year. The Theil index ranges from 0 (perfect integration) to 1 (perfect segregation) and can be interpreted as a rescaled likelihood ratio test for the null hypothesis that every establishment employs the national occupation mix (Theil and Finezza 1971). Over our sample period the index rises steadily from 0.46 to 0.53, implying that high- and low-wage occupations are increasingly segregated between establishments.

Overall we conclude that the degree of sorting of different education and occupation groups to different establishments has risen in West Germany over our sample period. This rise may account for some share of the the increasing importance of establishment effects in a wage model.

IV.B. *An Event Study Analysis of the Effect of Job Changes on Wages*

If the variation in wages across establishments is mainly due to sorting, then people who change workplaces will not necessarily experience systematic wage changes. If, on the other hand, different establishments pay different average wage premiums, then individuals who join a workplace where *other* workers are highly paid will on average experience a wage gain, whereas those who join a workplace where others are poorly paid will experience a wage loss. Figures Va and Vb present simple event-study analyses that examine the wage effects of job transitions in the early (1985–1991) and later (2002–2009) years of our sample, classifying the origin and destination workplaces by the mean wages of other workers at those workplaces.

Specifically, we begin by calculating the distribution of mean coworker wages across all person-year observations in a given time interval (1985–91 or 2002–9). For job changers with at least two consecutive years in both the old and new jobs, we classify the *old* job based on the quartile of coworker mean wages in the last year at that job, and the *new* job based on the quartile of coworker mean wages in the first year on that job. We then assign job changers to 16 cells based on the quartiles of coworker wages at the origin and destination workplaces. Finally, we calculate mean wages in the years before and after the job change event in each cell.²⁰

20. We drop observations at establishments with only one full-time male employee. We also exclude job changers who spend a year (or more) out of full-time employment in between consecutive full-time jobs. Note that job changers could

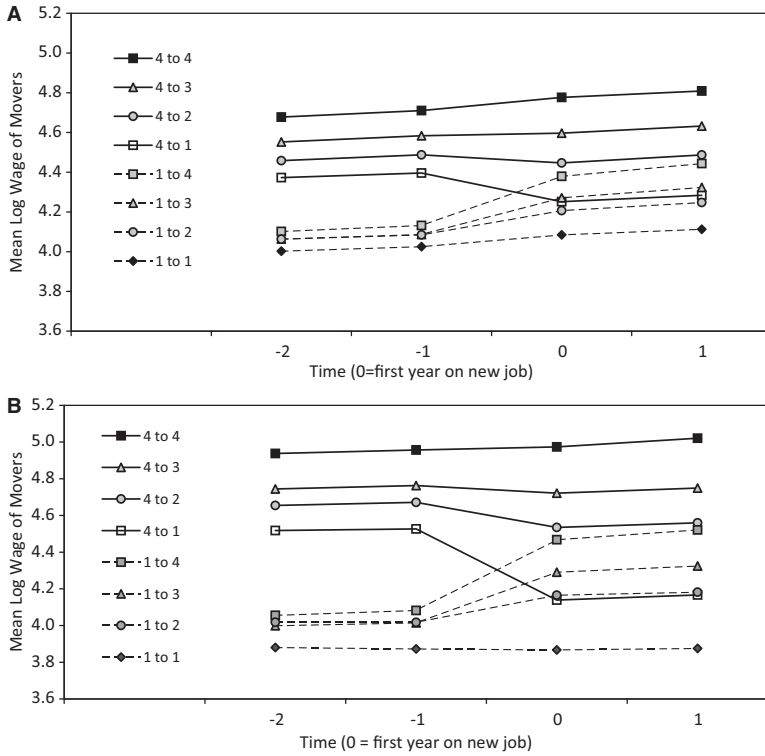


FIGURE V

Mean Wages of Job Changers Classified by Quartile of Mean Wage of Coworkers at Origin and Destination Establishment (A) 1985–1991, (B) 2002–2009

Figure shows mean wages of male workers observed in 1985–1991 or 2002–2009 who change jobs in the respective interval, and held the preceding job for two or more years, and the new job for two or more years. “Job” refers to establishment with most earnings in year, excluding part-time work. Each job is classified into quartiles based on mean wage of coworkers.

For clarity the figures only show the wage profiles for workers leaving quartile 1 and quartile 4 jobs (i.e., those with the lowest-paid and highest-paid coworkers). Online Appendix Table A.3 provides a complete listing of mean wages before and after the job change event for each of the 16 cells in the two intervals. In that table we also show the numbers of movers in each

move directly from job to job or have an intervening spell of nonemployment (or part-time employment). Finally, since the sample periods include seven or eight years, some individuals can appear in the event study more than once.

cell (which range from 30,000 to 500,000) and a trend-adjusted wage change for each job change group.

The figures suggest that different mobility groups have different wage levels before and after a move. For example, average wages prior to a move for workers who go from quartile 4 to quartile 1 jobs are lower than for those who go from quartile 4 to quartile 2 jobs, with similar patterns for the other mobility groups. Within mobility groups there is also strong evidence that moving to a job with higher paid coworkers raises pay. People who start in quartile 1 jobs and move to other quartile 1 jobs have relatively constant wages, and those who move to higher quartile jobs experience wage increases. Likewise, people who start in quartile 4 jobs experience little change (other than a modest upward trend affecting all groups in 1985–1991) if they move to another quartile 4 job, but otherwise suffer wage losses, with larger losses for those who move to lower quartile jobs.

Comparing Figures Va and Vb, it appears that the size of the wage gains and losses associated with job transitions grew dramatically from the late 1980s to the 2000s. In the 1985–1991 period, for example, a transition from quartile 1 to quartile 4 was associated with a trend-adjusted wage increase of roughly 23 log points, and in the 2002–2009 period, the same transition was associated with a 47 log point increase. Likewise, in the 1985–1991 period, a transition from quartile 4 to quartile 1 was associated with a trend-adjusted wage loss of 22 log points; in the 2002–2009 period, the same transition yielded a 43 log point drop. This striking growth in the magnitude of the wage gains and losses associated with job mobility is one of our key findings, and underlies our results in Section VI on the growing role of establishment heterogeneity in wage inequality.

Another interesting feature of Figures Va and Vb is the approximate symmetry of the wage losses and gains for those who move between quartile 1 and quartile 4 establishments. The gains and losses for other mover categories exhibit a similar degree of symmetry, particularly after adjusting for trend growth in wages (see Online Appendix Table A.3). This symmetry suggests that a simple model with additive worker and establishment effects may provide a reasonable characterization of the mean wages resulting from different pairings of workers to establishments.²¹

21. Notice that if the mean log wage paid to worker i at establishment j can be written as $m_{ij} = \alpha_i + \psi_j + z_{ij}$, where z_{ij} is a random error, then the average wage

A final important characteristic of the wage profiles in Figures Va and Vb is the absence of any Ashenfelter (1978)-style transitory dip (or rise) in the wages of movers in the year before moving.²² The profiles of average daily wages are remarkably flat in the years before and after a move. Taken together with the approximate symmetry of the wage transitions already noted, these flat profiles suggest that the wages of movers may be well approximated by the combination of a permanent worker component, an establishment component, and a time-varying residual component that is uncorrelated with mobility.

V. ECONOMETRIC MODEL AND METHODS

With this background we now turn to our econometric framework for disentangling the components of wage variation attributable to worker-specific and employer-specific heterogeneity. In a given time interval our data set contains N^* person-year observations on N workers and J establishments. The function $\mathbf{J}(i, t)$ gives the identity of the unique establishment that employs worker i in year t . We assume that the log daily real wage y_{it} of individual i in year t is the sum of a worker component α_i , an establishment component $\psi_{\mathbf{J}(i, t)}$, an index of time-varying observable characteristics $x'_{it}\beta$, and an error component r_{it} :

$$(1) \quad y_{it} = \alpha_i + \psi_{\mathbf{J}(i, t)} + x'_{it}\beta + r_{it}.$$

Following AKM, we interpret the person effect α_i as a combination of skills and other factors that are rewarded equally across employers. Likewise, we interpret the index $x'_{it}\beta$ as a combination of life cycle and aggregate factors that affect worker i 's

gain for moving from establishment j to establishment k is $\psi_k - \psi_j$, while the average gain for moving from k to j is $\psi_j - \psi_k$, that is, the wage changes for movers in the two directions are equal and opposite. If wages contain a common trend component, the trend-adjusted wage changes will be symmetric.

22. Ashenfelter (1978) noted that participants in job training programs were likely to experience a transitory dip in earnings in the year prior to entering the program. Our setting is different because we are studying job transitions, and because we measure average daily wages rather than annual earnings. Changes in the number of days worked at a constant wage (due to a spell of unemployment after a job loss, for example) will not affect our estimates.

productivity at all jobs. We include in x_{it} an unrestricted set of year dummies as well as quadratic and cubic terms in age fully interacted with educational attainment. Finally, we interpret the establishment effect ψ_j as a proportional pay premium (or discount) that is paid by establishment j to all employees (i.e., all those with $\mathbf{J}(i, t) = j$). Such a premium could represent rent-sharing, an efficiency wage premium, or strategic wage posting behavior (e.g., Burdett and Mortensen (1998); Moscarini and Postel-Vinay 2012).

We assume that the error term r_{it} in equation (1) consists of three separate random effects: a match component $\eta_{i\mathbf{J}(i,t)}$, a unit root component ζ_{it} , and a transitory error ε_{it} :

$$r_{it} = \eta_{i\mathbf{J}(i,t)} + \zeta_{it} + \varepsilon_{it}.$$

The match effect η_{ij} represents an idiosyncratic wage premium (or discount) earned by individual i at establishment j , relative to the baseline level $\alpha_i + \psi_j$. We assume that η_{ij} has mean zero for all i and for all j in the sample interval. Match-specific wage components arise in models in which there is an idiosyncratic productivity component associated with each potential job match, and workers receive some share of the rents from a successful match (e.g., Mortensen and Pissarides 1994). The unit root component ζ_{it} captures drift in the portable component of the individual's earnings power. Innovations to this component could reflect (market-wide) employer learning, unobserved human capital accumulation, health shocks, or the arrival of outside offers which, in some models (e.g., Postel-Vinay and Robin 2002), bid up the offered wage at the current job and other potential jobs. We assume that ζ_{it} has mean zero for each person in the sample interval, but contains a unit root.²³ Finally, the transitory component ε_{it} represents any left-out mean-reverting factors. We assume that ε_{it} has mean zero for each person in the sample interval.

Let y denote the stacked $N^* \times 1$ vector of wages sorted by person and year, $D \equiv [d^1, \dots, d^N]$ an $N^* \times N$ design matrix of worker indicators, $F \equiv [f^1, \dots, f^J]$ an $N^* \times J$ design matrix of firm indicators, $X \equiv [x^1, \dots, x^K]$ an $N^* \times K$ matrix of time varying

23. Thus, the mean zero restriction on this component defines the person specific intercept α_i .

covariates, and r an $N^* \times 1$ vector of composite errors. Then our model can be written in matrix notion as:

$$(2) \quad \begin{aligned} y &= D\alpha + F\psi + X\beta + r \\ &= Z'\xi + r, \end{aligned}$$

where $Z \equiv [D, F, X]$ and $\xi \equiv [\alpha', \psi', \beta']'$.

We estimate (2) by ordinary least squares (OLS). These estimates solve the standard normal equations:

$$(3) \quad Z'Z\xi = Z'y.$$

A unique solution requires that the matrix $Z'Z$ has full rank. As shown by AKM and Abowd, Creedy, and Kramarz (2002), the establishment and person effects in (1) are only separately identified within a “connected set” of establishments that are linked by worker mobility. To simplify estimation, we restrict our analysis to the largest connected set of establishments in each time interval. Within the largest connected set—which includes over 95% of the workers and 90% of the establishments in each interval—we normalize the establishment effects by omitting the last establishment dummy. The Online Appendix provides details of our procedure for obtaining a solution to the normal equations. In brief, we use an iterative conjugate gradient algorithm (as in Abowd, Creedy, and Kramarz 2002), which solves for the vector of coefficients ξ without actually inverting the matrix $Z'Z$.

V.A. Assumptions on the Assignment Process

For OLS to identify the underlying parameters of interest, we need the following orthogonality conditions to hold:

$$(4) \quad E[d^{i'}r] = 0 \quad \forall i, E[f^{j'}r] = 0 \quad \forall j, E[x^{k'}r] = 0 \quad \forall k.$$

The assumption that all three components of r are orthogonal to the time-varying covariates x^k is standard. Moreover, our assumptions on the means of η_{ij} , ζ_{it} , and ε_{it} imply that $E[d^{i'}r] = 0$. Thus, the key issue for identification is whether the composite errors r are orthogonal to the vectors of establishment identifiers f^j .

A sufficient condition for $E[f^{j'}r] = 0$ to hold for every establishment j is that the assignment of workers to establishments obeys a strict exogeneity condition with respect to r :

$$(5) \quad P(\mathbf{J}(i, t) = j|r) = P(\mathbf{J}(i, t) = j) = G_{jt}(\alpha_i, \psi_1, \dots, \psi_J) \quad \forall i, t,$$

where the employment probability functions $G_{jt}(\cdot)$ sum to 1 for every worker in every period.²⁴ Importantly, (5) does **not** preclude systematic patterns of job mobility related to α_i and/or $\{\psi_1, \dots, \psi_J\}$.²⁵ For example, a comparison of the number of job movers underlying the profiles in Figures Va and Vb suggests that workers are more likely to move from low- to high-wage establishments than in the opposite direction (see Online Appendix Table A.3). This does not represent a violation of (4) because our fixed effects estimator conditions on the actual sequence of establishments at which each employee is observed. Similarly, higher (or lower) turnover rates among lower productivity workers is fully consistent with (4), as is the possibility that high-skilled workers are more (or less) likely to transition to workplaces with higher wage premiums. Finally, as the subscripts on the function $G_{jt}(\cdot)$ make clear, mobility may be related to fixed or time-varying nonwage characteristics of establishments, such as location or recruiting effort. Such mobility aids in identification by expanding the connected set of establishments.

We now consider three forms of “endogenous mobility” that violate (5) and could cause biases in our approach. The first is sorting based on the idiosyncratic match component of wages, η_{ij} . This form of sorting—which is familiar from the standard Roy (1951) model—changes the interpretation of the estimated establishment effects, since different workers have different wage premiums at any given establishment, depending on the value of their match component.²⁶

It is possible to test for such sorting in two ways. First, if workers tend to select jobs based on the match component, then we would expect the (trend-adjusted) wage *gains* for workers who move from one establishment to another to be quite different from

$$24. \text{ **Proof:}** E[f^{j|r}] = E\left[\sum_{i,t} f_{it}^j r_{it}\right] = E\left[\sum_{i,t} E[f_{it}^j | r] r_{it}\right] = E\left[\sum_{i,t} G_{jt}(\alpha_i, \psi_1, \dots, \psi_J) r_{it}\right] = \sum_{i,t} G_{jt}(\alpha_i, \psi_1, \dots, \psi_J) E[r_{it}] = 0.$$

25. For instance, mobility might follow a stationary Markov process: $P(\mathbf{J}(i, t + 1) = j' | \mathbf{J}(i, t) = j) = H_{j,j'}(\alpha_i, \psi_1, \dots, \psi_J)$ which (along with an appropriate initial condition) would lead the set of worker-firm assignments to obey (5) in each period.

26. See French and Taber (2011) for a detailed discussion of Roy-type models and references to the related literature.

the wage losses for those who make the opposite transition. Ignoring any wage growth arising from experience or year effects, and any correlation of mobility with ζ_{it} or ε_{it} , the expected wage change for a worker who moves from establishment 1 to establishment 2 between period $t - 1$ and t is:

$$\begin{aligned} E[y_{it} - y_{it-1} | \mathbf{J}(i, t) = 2, \mathbf{J}(i, t - 1) = 1] \\ = \psi_2 - \psi_1 + E[\eta_{i2} - \eta_{i1} | \mathbf{J}(i, t) = 2, \mathbf{J}(i, t - 1) = 1], \end{aligned}$$

and the expected wage change for a worker who moves in the opposite direction is

$$\begin{aligned} E[y_{it} - y_{it-1} | \mathbf{J}(i, t) = 1, \mathbf{J}(i, t - 1) = 2] \\ = \psi_1 - \psi_2 + E[\eta_{i1} - \eta_{i2} | \mathbf{J}(i, t) = 1, \mathbf{J}(i, t - 1) = 2]. \end{aligned}$$

By contrast, under our maintained assumptions, the expected wage changes are $\psi_2 - \psi_1$ and $\psi_1 - \psi_2$, respectively. As the importance of the match components increases, the sorting bias terms $E[\eta_{i2} - \eta_{i1} | \mathbf{J}(i, t) = 2, \mathbf{J}(i, t - 1) = 1]$ and $E[\eta_{i1} - \eta_{i2} | \mathbf{J}(i, t) = 1, \mathbf{J}(i, t - 1) = 2]$, both of which are positive, will dominate, leading to wage gains for movers in both directions. We have already seen from the simple event studies in Figures Va and Vb that the gains associated with transitioning from a low- to a high-coworker wage establishment are roughly equal to the losses associated with moving in the opposite direction. Moreover, the mean wage changes for workers who move between establishments in the same coworker wage quartile are close to zero in interval 4 (a period with negligible aggregate wage growth), suggesting that there is no general mobility premium for movers. We examine these issues in more detail by looking directly at wage changes for workers who move between establishments with different estimated fixed effects, and we reach the same conclusions: wage gains and losses are (roughly) symmetric for movers between higher and lower wage establishments, and there are no wage gains for moving between establishments with similar estimated fixed effects.

Second, if match effects are important, a fully saturated model that includes a separate dummy for each job ought to fit the data much better than our additively separable baseline model. As we show shortly, the job match model has a better fit statistically, but the improvement is small. The standard deviation of η_{ij} implied by the improvement in fit is in the relatively

modest range of 0.06–0.08, which limits the scope for potential endogeneity.²⁷

A second form of endogenous mobility may arise if drift in the expected wage a person can earn at all jobs (i.e., the shocks to the unit root error component ζ_{it}) predicts firm-to-firm transitions. For example, in learning models with comparative advantage (e.g., Gibbons et al. 2005) some components of worker ability are revealed slowly over time. If these abilities are valued differently at different establishments, workers who turn out to be more productive than expected will experience rising wages at their initial employer and may also be more likely to move to higher wage establishments (i.e., firms specializing in skilled workers).²⁸ Likewise, workers who turn out to be less productive than expected will experience wage declines and will be more likely to move to lower wage establishments. Such patterns will lead to an overstatement of the importance of establishments, as the drift component ζ_{it} in wages will be positively correlated with the change in the establishment effects. The absence of any systematic trends in wages prior to a move for workers who transition to better or worse jobs casts doubt on the importance of learning as a major source of bias in our estimates.²⁹

The drift component ζ_{it} could also be correlated with mobility patterns if workers obtain outside offers that bid up their wages and also predict transitions to higher wage establishments (as in Postel-Vinay and Robin 2002). This “offer-shopping” mechanism implies that OLS estimates of an AKM-style model may overstate the importance of establishment effects. However, offer shopping cannot explain the patterns of wage losses experienced by

27. Small match effects in wages do not necessarily imply small match effects in productivity as workers may simply have low bargaining power in negotiating with their employers. Several recent studies have found a low bargaining share for workers (Card, Devicienti, and Maida 2010; Cahuc, Postel-Vinay, and Robin 2006; Carlsson, Messina, and Skans 2011).

28. Gibbons et al. (2005) consider the case where different *sectors* value skills differently. Their model could be extended to deal with differences across employers within a sector.

29. Note that instantaneous learning—in which workers are suddenly revealed to be more or less productive and make a job transition—could generate spurious establishment effects without detectable blips or dips in wages prior to a job transition (Gibbons and Katz 1992). Although bias from such a process would be difficult to detect, empirical estimates suggest that employer learning occurs over a horizon of several years (Lange 2007).

workers who move to lower wage establishments.³⁰ Nor can it explain the symmetry in the wage gains and losses associated with transitions between high- and low-paying establishments exhibited in Figures Va and Vb.

A third form of endogenous mobility could arise if fluctuations in the transitory error ε_{it} are associated with systematic movements between higher and lower wage workplaces. Suppose for example that ε_{it} contains an industry by year component and that workers tend to cycle between jobs at higher wage employers that are relatively sensitive to industry conditions and jobs at low-wage employers that are more stable. In this scenario, workers who have recently experienced a positive (negative) transitory wage shock will be more likely to move to higher (lower) wage establishments, leading to an attenuation in the estimated employment effects. As noted in the discussion of Figures Va and Vb, however, there is little evidence that mobility patterns are related to transitory wage fluctuations, suggesting that any correlation between mobility patterns and the ε_{it} 's is small.

V.B. Variance Decompositions

Using equation (1), the variance of observed wages for workers in a given sample interval can be decomposed as:

$$(6) \quad \begin{aligned} \text{Var}(y_{it}) &= \text{Var}(\alpha_i) + \text{Var}(\psi_{\mathbf{J}(i,t)}) + \text{Var}(x'_{it}\beta) \\ &+ 2\text{Cov}(\alpha_i, \psi_{\mathbf{J}(i,t)}) + 2\text{Cov}(\psi_{\mathbf{J}(i,t)}, x'_{it}\beta) \\ &+ 2\text{Cov}(\alpha_i, x'_{it}\beta) + \text{Var}(r_{it}). \end{aligned}$$

In our analysis that follows we use a feasible version of this decomposition that replaces each term with its corresponding sample analogue.³¹

As discussed in the Online Appendix, sampling errors in the estimated person and establishment fixed effects will lead to positive biases in our estimates of $\text{Var}(\alpha_i)$ and $\text{Var}(\psi_{\mathbf{J}(i,t)})$. In addition, correlation between the sampling errors of the person and

30. Wage losses are possible in such models but should not easily be predicted by the average coworker wage at the origin and destination establishment.

31. For instance, $\text{Var}(y_{it})$ is estimated by $S_y \equiv \frac{1}{N^s-1} \sum_{i,t} (y_{it} - \bar{y})^2$ where $\bar{y} \equiv \frac{1}{N^s} \sum_{i,t} y_{it}$. Likewise, $\text{Cov}(\alpha_i, \psi_{\mathbf{J}(i,t)})$ is estimated by $S_{\hat{\alpha}_i, \hat{\psi}_{\mathbf{J}(i,t)}} \equiv \frac{1}{N^s-1} \sum_{i,t} (\hat{\alpha}_i - \bar{\hat{\alpha}}) \hat{\psi}_{\mathbf{J}(i,t)}$ where $\hat{\alpha}_i$ and $\hat{\psi}_{\mathbf{J}(i,t)}$ refer to estimated person and establishment effects, respectively, and $\bar{\hat{\alpha}} \equiv \frac{1}{N^s} \sum_{i,t} \hat{\alpha}_{it}$.

establishment effects is likely to induce a negative bias in the estimated covariance between the person and establishment effects (Andrews et al. 2008; Mare and Hyslop 2006). We do not attempt to construct bias-corrected estimates of $Var(\alpha_i)$, $Var(\psi_{J(i,t)})$, or $Cov(\alpha_i, \psi_{J(i,t)})$.³² Instead, we analyze trends in the estimated moments under the assumption that the biases are similar in earlier and later sample intervals.

VI. RESULTS

We estimate model (1) using data from the four overlapping sample intervals: 1985–1991, 1990–1996, 1996–2002, and 2002–2009. Columns (1)–(4) of Table II show, for each interval, the number of person-year observations for full-time male workers, the number of individuals, and the mean and standard deviation of log wages. In each interval we have 85–90 million person-year observations on wages for about 17 million individual workers. As expected from the patterns in Table I, the standard deviation of wages rises substantially from 0.38 in interval 1 (1985–1991) to 0.51 in interval 4 (2002–2009). Mean log wages rise about 5% from interval 1 to interval 2 and then are quite stable.

Columns (5)–(8) present a parallel set of statistics for the largest connected set of workers in each interval. Mobility rates between establishments are sufficiently high in West Germany that, in each interval, 97% of person-year observations and approximately 95% of all workers are included in the connected set. Mean wages for observations in the connected set are slightly higher than in the overall population of full-time male workers, whereas the dispersion of wages is slightly lower. Neither the relative size of the connected group nor the relative mean/standard deviation of wages in that group change across the four intervals, suggesting that there is little or no loss in focusing attention on the largest connected group for the remainder of the article.

Table III summarizes the estimation results for full-time male workers in each of the four intervals in our analysis. As shown in the top two rows, our models include 16–17 million person and 1.2–1.5 million establishment effects in each interval. To summarize our findings, we report the standard deviations of

32. We construct unbiased estimates of the standard deviation of r_{it} using the root mean squared error of the regression, which adjusts for the number of parameters estimated in the regression model.

TABLE III
ESTIMATION RESULTS FOR AKM MODEL, FIT BY INTERVAL

	(1)	(2)	(3)	(4)
	Interval 1 1985–1991	Interval 2 1990–1996	Interval 3 1996–2002	Interval 4 2002–2009
Person and establishment parameters				
Number person effects	16,295,106	17,223,290	16,384,815	15,834,602
Number establishment effects	1,221,098	1,357,824	1,476,705	1,504,095
Summary of parameter estimates				
Std. dev. of person effects (across person-year obs.)	0.289	0.304	0.327	0.357
Std. dev. of establ. Effects (across person-year obs.)	0.159	0.172	0.194	0.230
Std. dev. of Xb (across person-year obs.)	0.121	0.088	0.093	0.084
Correlation of person/establ. Effects (across person-year obs.)	0.034	0.097	0.169	0.249
Correlation of person effects/Xb (across person-year obs.)	-0.051	-0.102	-0.063	0.029
Correlation of establ. effects/Xb (across person-year obs.)	0.057	0.039	0.050	0.112
RMSE of AKM residual	0.119	0.121	0.130	0.135
Adjusted R-squared	0.896	0.901	0.909	0.927
Comparison match model				
RMSE of match model	0.103	0.105	0.108	0.112
Adjusted R^2	0.922	0.925	0.937	0.949
Std. dev. of match effect*	0.060	0.060	0.072	0.075
Addendum				
Std. dev. log wages	0.370	0.384	0.432	0.499
Sample size	84,185,730	88,662,398	83,699,582	90,615,841

Notes: Results from OLS estimation of equation (1). See notes to Table II for sample composition. Xb includes year dummies interacted with education dummies, and quadratic and cubic terms in age interacted with education dummies (total of 39 parameters in intervals 1–3, 44 in interval 4). Match model includes Xb and separate dummy for each job (person-establishment pair).

*Standard deviation of match effect estimated as square root of difference in mean squared errors between AKM model and match effect model.

the estimated person and establishment effects, the standard deviation of the time-varying covariate index, and the correlations between these components. We also report the root mean squared error (RMSE) from the model and the adjusted R^2 statistic, both of which take account of the large number of parameters being estimated in our models.

The results in Table III point to several interesting conclusions. First, the person effects and the establishment effects both become more variable over time. The correlation between the person and establishment effects also rises substantially, from 0.03 in period 1 to 0.25 in period 4. Relative to these two main components, the covariate index $x'_{it}\hat{\beta}$ exhibits less dispersion, especially in the three later intervals, when aggregate wage growth was negligible. A second observation is that the residual standard deviation of wages (measured by the RMSE) is relatively small and rises only slightly over time. The high explanatory power of the AKM model is reflected in the adjusted R^2 statistics, which increase from 90% to 93% across the intervals.

Table III also shows the RMSEs and adjusted R^2 statistics from models with unrestricted match effects (i.e., separate dummies for each person-establishment combination). These models fit somewhat better than the baseline AKM models, confirming the presence of a match component in wages. However, the estimated standard deviation of the match effects rises only slightly over time, from 0.060 to 0.075. This small change is consistent with our interpretation of the match effects as uncorrelated random effects. If instead they were specification errors caused by incorrectly imposing additivity of the person and establishment effects, we would expect the relative fit of the AKM model to deteriorate over time as the variances of the person and establishment effects increase in magnitude.

Additional insight into the nature of the match-specific error components comes from examining the errors for different groups of workers at different establishments. Violations of the separability assumptions in the AKM model might be expected to cause relatively large mean residuals for particular types of matches—say, cases where highly skilled workers are employed at low-wage establishments. To search for such neglected interactions, we divided the estimated person and establishment effects in each interval into deciles, and computed the mean residual in each of the 100 person \times establishment decile cells. Figure VI shows the mean residuals in each cell using data from interval

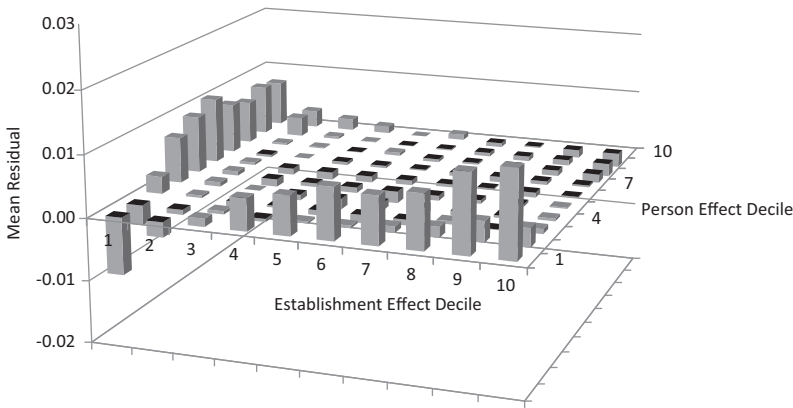


FIGURE VI

Mean Residuals by Person/Establishment Deciles, 2002–2009

Figure shows mean residuals from estimated AKM with cells defined by decile of estimated establishment effect, interacted with decile of estimated person effect. See column (4) of Table III for summary of model parameters.

4. Reassuringly, the mean residuals in each cell are small, and uniformly less than 1% in magnitude.³³ The largest deviations appear among the lowest-decile workers and the lowest-decile establishments: for these groups there appear to be small but systematic departures from the additive separability assumptions of the AKM model. A complete investigation of these non-separabilities is clearly a topic for future research, but given the small magnitude of the deviations we suspect that they have relatively little effect on our basic conclusions.

A related diagnostic focuses on the ability of the model to capture wage dynamics associated with job changes. Figure VII presents an event-study analysis for job transitions in the 2002–2009 period, similar to the event study in Figure Vb but classifying origin and destination workplaces by the quartile of their estimated establishment effects. As in Figures Va and Vb, there is little evidence of transitory wage shocks in the year just before (or just after) a job change. The average wage gain for those who move from a quartile 1 to a quartile 4 establishment is also very

33. We emphasize that there is no mechanical reason for the mean residuals in each cell to be close to zero. Although there are 20 linear restrictions on the 100 cell means, there are 80 remaining degrees of freedom.

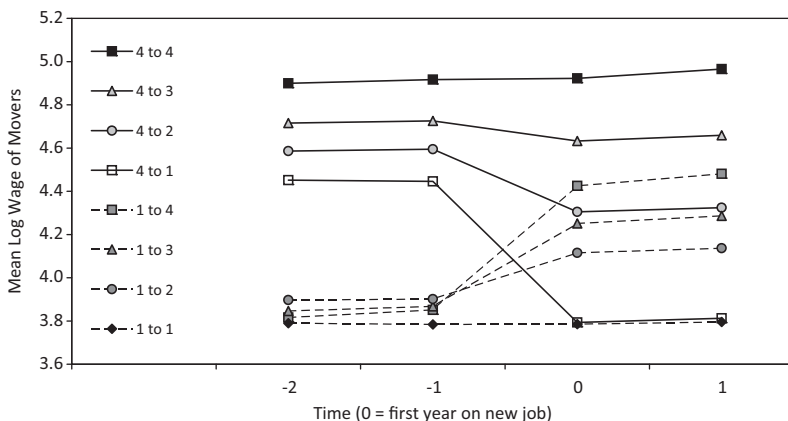


FIGURE VII
 Mean Wages of Movers Classified by Quartile of Establishment Effects for Origin and Destination Firms, 2002–2009

Figure shows mean wages of male workers observed in 2002–2009 who change jobs in the interval and held the preceding job for two or more years, and the new job for two or more years. “Job” refers to main job in year, excluding part-time jobs. Each job is classified into quartiles based on estimated establishment effect from AKM model presented in Table III column 4.

similar to the average wage loss for those who move in the opposite direction, confirming the symmetry prediction from our model.

The wage changes in Figure VII for people who move between quartile groups are relatively large, reflecting the relatively large dispersion in the estimated establishment effects. In contrast, people who switch jobs but stay within the same quartile group have small average wage changes. The absence of a general mobility premium for these workers suggests that job mobility is not driven by idiosyncratic job-match effects. We have also examined the mean wage *residuals* for transitions between the various origin and destination cells. We find relatively small mean residuals (under 3% in absolute value) in every transition cell. We take this as evidence that at a minimum, our approach provides a good first approximation to the wage determination process, consistent with the relatively high adjusted R^2 statistics for the model.

VI.A. *Decomposing Changes in the Structure of Wages*

We now turn to the implications of the estimated models in Table III for understanding the rise in wage inequality over time.

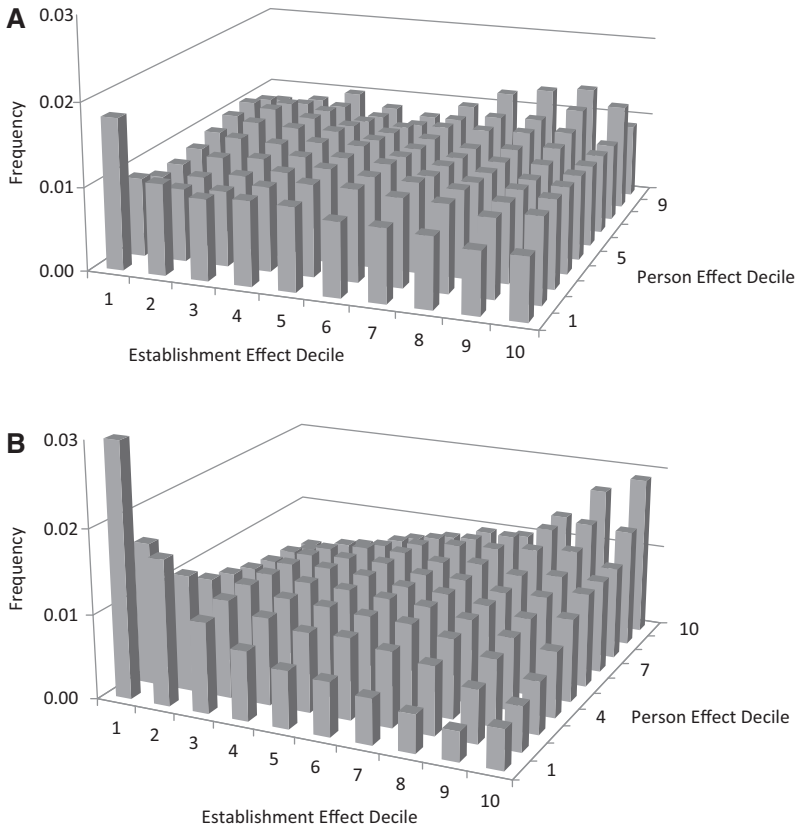


FIGURE VIII

Joint Distribution of Person and Establishment Effects (A) 1985–1991, (B) 2002–2009

Figure shows joint distribution of estimated person and establishment effects from AKM model for respective intervals. See Table III columns (1) and (4) for summary of model parameters for 1985–1991 and 2002–2009.

As noted, the estimated person and establishment effects both exhibit increasing dispersion over time. Perhaps even more striking is the rise in the correlation between these effects. This increase suggests a fundamental change in the way workers are sorted to workplaces.³⁴ The increase in assortative matching is

34. It is important to remember that these components only provide a description of the covariance structure of *wages*. As pointed out by Lopes de Melo (2008), Lentz and Mortensen (2010), and Eeckhout and Kircher (2011), the correlation

illustrated in Figures VIIIa and VIIIb, which show plots of the joint distributions of the estimated person and establishment effects in intervals 1 and 4, using the same decile categories as in Figure VI. The joint distribution for our earliest sample interval (Figure VIIIa) shows little evidence of assortative matching. In contrast, the joint distribution for our last interval (Figure VIIIb) shows a clear tendency for higher wage workers to sort to establishments offering larger wage premiums.

To quantify the separate contributions of rising dispersion in person and establishment effects, and increases in assortative matching, we conduct a simple variance decomposition based on equation (6) in each interval. Table IV summarizes the results of this decomposition. Between intervals 1 and 4, the variance of the person effects rose from 0.084 to 0.127, representing about 40% of the overall increase in the variance of wages, while the variance of the establishment effects rose from 0.025 to 0.053, contributing another 25%. The covariance term also rose from 0.003 to 0.041, adding about 34% of the total rise in wage variance.

Table IV also reports three simple counterfactual scenarios that help illustrate the relative importance of the various terms. Under the first counterfactual we hold constant the correlation of worker and firm effects (i.e., no change in sorting) but allow the variances of the person and establishment effects to rise. Under this scenario, the variance of wages would have risen by 0.077, or about 70% of the actual rise, suggesting that the increase in sorting can account for about 30% of the rise in variance. In the second counterfactual we hold constant the variance of establishment effects but allow the variance of the person effects and the correlation between the person and establishment effects to rise. Under this scenario, the variance of wages rises by 0.072, suggesting that the rise in dispersion of establishment effects accounts for about a third of the rise in the variance of wages. Finally, in the third scenario we hold constant sorting and the rise in the variance of the establishment effects, leading to a counterfactual rise in the variance of wages of 0.047 (about 40% of the total actual increase) attributable to the rise in the dispersion of the person effects.

between worker and establishment wage effects need not correspond to the correlation between worker and establishment productivity.

TABLE IV
DECOMPOSITION OF THE RISE IN WAGE INEQUALITY

	Interval 1 (1985-1991)		Interval 4 (2002-2009)		Change from interval 1 to 4	
	(1) Var. component	(2) Share of total	(3) Var. component	(4) Share of total	(5) Var. component	(6) Share of total
Total variance of log wages	0.137	100.0	0.249	100.0	0.112	100
Components of variance:						
Variance of person effect	0.084	61.3	0.127	51.2	0.043	39
Variance of establ. effect	0.025	18.5	0.053	21.2	0.027	25
Variance of Xb	0.015	10.7	0.007	2.8	-0.008	-7
Variance of residual	0.011	8.2	0.015	5.9	0.003	3
2cov(person, establ.)	0.003	2.3	0.041	16.4	0.038	34
2cov(Xb, person + establ.)	-0.001	-1.0	0.006	2.4	0.007	7
Counterfactuals for variance of log wages*						
1. No rise in correl. of person/estab. effects	0.137		0.213		0.077	69
2. No rise in var. of estab. effect	0.137		0.209		0.072	64
3. Both 1 and 2	0.137		0.184		0.047	42

Notes. See notes to Table II for sample composition. Calculations based on estimated AKM models summarized in Table III. Entry in column (5) is change in variance component from interval 1 to interval 4. Entry in column (6) is ratio of the change in the variance component to the total change in variance of wages reported in first row of table (as a percentage).

*Counterfactual 1 computes the counterfactual rise in variance assuming the correlation between the person and establishment effects remains at its interval 1 value—that is, imposing the restriction that $Cov_{\rho}(\text{person, establ.}) = \rho_1 \text{Var}_{\rho}(\text{person})^{1/2} \times \text{Var}_{\rho}(\text{establ.})^{1/2}$ where the subscript ρ refers to the interval ρ value of the statistic and ρ_1 is the correlation between the person and establishment effects in interval 1. Counterfactual 2 assumes that the variance of establishment effects remains at its interval 1 level. Counterfactual 3 imposes both restrictions.

VI.B. *Robustness Check: Men with Apprenticeship Training Only*

As discussed earlier, a concern with the German social security data is censoring, which affects 10–14% of men in any year of our sample. Censoring is particularly prevalent among older, university-educated men, up to 60% of whom have earnings above the maximum rate. To address this concern, we reestimate our main models using only data for men whose highest educational qualification is an apprenticeship. This relatively homogeneous group represents about 60% of our overall sample and has a censoring rate of about 9% a year. Over the 1985–2009 sample period wage inequality for apprentice-trained men rose substantially, though not as much as over the labor force as a whole, reflecting a widening of education-related wage gaps (see later discussion). Specifically, between interval 1 and interval 4 the standard deviation of log wages for apprentice-trained men rose from 0.328 to 0.388—an 18% rise—versus the 35% increase for all full-time men.

Online Appendix Tables A.4 and A.5 summarize the estimation results for this subsample, using the same format as Tables III and IV. In brief, the results are qualitatively very similar to the results for the entire sample. Specifically, the rise in wage inequality is attributed to a rise in the dispersion of the person-specific component of pay, a rise in the dispersion of the establishment-level component, and a rise in their covariance. We infer that our main conclusions are robust to our procedure for handling censoring in the social security earnings data.

VI.C. *Results for Full-Time Females*

In this section we briefly summarize our findings for full-time female workers. As noted in Figure III, the standard deviation of wages for full-time female workers follows a very similar trend to the standard deviation for men, with a modest rise from 1985 to 1995, followed by a more rapid upward trend after 1996. Trends in residual wage inequality are also very similar for full-time female workers and for full-time men. In the Online Appendix, we show trends in the residual standard deviations of wage models for women that introduce controls for education and experience, industry effects, occupation effects, and a complete set of establishment dummies (see Online Appendix Figure A.2). As is the case for men, industry and occupation controls explain an

important share of wage variation among full-time women but do not explain much of the rise in inequality since the 1990s. Models with establishment effects explain a much larger share of the rise, suggesting that wage differentials between establishments have risen substantially for women.

To explore the role of workplace-specific wage premiums more formally, we fit a series of AKM-style models for full-time women similar to the models in Table III. We show in the Online Appendix (Tables A.6 and A.7) that the rise in inequality of female wages in West Germany is attributable to a combination of widening dispersion in the person-component of wages (about 50% of the overall rise), widening dispersion in the wage premiums at different workplaces (about 25% of the rise), and a rise in the assortative matching of workers to plants (about 20% of the rise). Although these results are qualitatively very similar to our findings for men, they suggest that the rise in matching assortativeness explains a smaller share of the rise in the variance of wages for women than men (20% versus 34%).

We suspect that some of the difference between men and women in the measured role of assortative matching may be due to decreased precision in our estimates of the worker and plant effects in the female sample. In particular, there is likely to be a larger negative bias in the estimated covariance between the worker and plant components in samples with fewer observed job matches per establishment or per worker (see Mare and Hyslop 2006). In our 2002–2009 sample interval, the largest connected set of male workers and plants has 17.4 job matches per plant and 1.65 matches per worker. The largest connected set of female workers and plants, by comparison, has only 11.9 job matches per plant and 1.48 matches per worker, suggesting that the covariance between the worker and establishment components may be more negatively biased for women.

VII. DECOMPOSING BETWEEN-GROUP WAGE DIFFERENTIALS

Germany, like many other countries, has experienced substantial increases in the wage gaps between groups of workers with different skill characteristics. The model in (1) allows a simple decomposition of between-group wage gaps into a component attributable to the average permanent skill characteristics

of workers, a component attributable to the average workplace premium of the establishments at which they work, and a component reflecting the mean values of the time-varying observables. Consider a discretely valued time invariant worker characteristic G_i . From (1) and (4), the mean wage for workers in group g can be written:

$$(7) \quad E_g[y_{it}] = E_g[\alpha_i] + E_g[\psi_{J(i,t)}] + E_g[x'_{it}\beta],$$

where $E_g[\cdot] \equiv E[\cdot | G_i = g]$ denotes the expectation in group g . Using this result, the change in the mean wage differential between any two groups g_1 and g_2 can be decomposed into the sum of a relative change in the mean of the person effects in the two groups, a relative change in the mean of the establishment effects, and a relative change in the mean of the time-varying characteristics. The establishment component is particularly interesting in light of the evidence presented so far of increased assortativeness in the matching of workers to workplaces, which may differentially effect different education, industry, and occupation groups.

VII.A. Education

Table V presents a decomposition of changes in the mean wages of different education groups in West Germany between the first and fourth intervals relative to men with apprenticeship training.³⁵ Column (1) shows the change in the relative wages of each group: note that wages of the less educated groups have fallen relative to the base group, whereas the wages of the more educated groups have risen. Columns (2) and (3) show the relative changes in mean person and establishment effects (again, relative to apprentice-trained workers), and column (4) shows the remaining component. A striking conclusion from this decomposition is that 70% of the relative rise in wages of university-educated men, and 80% of the relative fall in the wages of workers with no (or missing) qualifications, is attributable to changes in their relative sorting to establishments that pay higher or lower wage premiums to all workers. Put differently, the increasing returns to different levels of education in Germany are driven primarily by changes in the quality of the jobs different education

35. For this analysis, we assign each worker a constant level of education in each time interval, based on the modal value of observed education.

TABLE V
 DECOMPOSITION OF CHANGES IN RELATIVE WAGES BY EDUCATION LEVEL, 1985–1991
 VERSUS 2002–2009

	(1)	(2)	(3)	(4)
	Change in mean log wage relative to apprentices	Change in mean person effect	Change in mean establishment effect	Remainder
Highest education qualification				
1. Missing/none	-14.6	1.8	-12.2	-4.2
2. Lower secondary school or less (no vocational training)	-10.5	-0.1	-6.3	-4.1
4. Abitur with or without vocational training*	10.1	0.0	2.6	7.5
5. University or more	5.7	1.5	3.9	0.3

Notes. Wage changes are measured between intervals 1 (1985–1991) and 4 (2002–2009). Remainder (column (4)) represents changing relative contribution of Xb component.

**Abitur* refers to Allgemeine Hochschulreife, a certificate of completion of advanced level high school.

groups can obtain, rather than by changes in the value of skills that are fully portable across jobs.

VII.B. Occupation

Autor, Levy, and Murnane's (2003) seminal study of technological change and task prices has led to renewed interest in the study of the occupational wage structure.³⁶ Our model provides a new perspective on this issue. Specifically, equation (7) implies that the between-occupation variance in mean wages can be decomposed as:

$$\begin{aligned}
 \text{Var}(E_g[y_{it}]) &= \text{Var}(E_g[\alpha_i]) + \text{Var}(E_g[\psi_{J(i,t)}]) + \text{Var}(E_g[x'_{it}\beta]) \\
 &\quad + 2\text{Cov}(E_g[\alpha_i], E_g[\psi_{J(i,t)}]) + 2\text{Cov}(E_g[\alpha_i], E_g[x'_{it}\beta]) \\
 &\quad + 2\text{Cov}(E_g[\psi_{J(i,t)}], E_g[x'_{it}\beta]),
 \end{aligned}
 \tag{8}$$

where $E_g[\cdot]$ denotes the expected value in occupation group g . Evaluating this equation in different time intervals using sample analogues, we can decompose changes in the variation in wages across occupations into components due to rising dispersion in the mean person effect between occupations, rising

36. See Acemoglu and Autor (2011) for a review of the related literature.

dispersion in the mean establishment wage premium earned by workers in different occupations, and changes in the covariance of the mean person effect and the mean establishment wage premium earned by workers in different occupations.³⁷

Panel A of Table VI reports the three main components of equation (8) evaluated in each of our four sample intervals, as well as the changes in the variance components between interval 1 and interval 4 and the shares of the overall change in between-occupation variance accounted for by each component.³⁸ The estimates suggest that the largest share of the rise in between-occupation inequality (42%) is attributable to a rise in the covariance between the mean person effect in an occupation and the mean establishment wage premium for that occupation. In other words, people in higher paid occupations are increasingly concentrated at establishments that pay all workers a higher wage premium, whereas those in lower paid occupations are increasingly concentrated at low-wage establishments. Another 28% is attributable to the variance in the wage premiums at different workplaces. Only about 30% of the rise in wage differentials between occupations is due to increasing variation in the permanent person-specific component of wages. We conclude that rising workplace heterogeneity and sorting are very important for understanding the rise in occupation-related wage differentials among West German men.

VII.C. *Industry*

The bottom panel of Table VI provides a parallel decomposition of the dispersion in mean wages across industries.³⁹ A large body of literature (e.g., Krueger and Summers 1988; Katz and Summers 1989) has examined the between-industry structure of pay differences. A still unresolved issue is the extent to

37. Because the variance components are calculated using occupational averages of the worker and establishment effects, they do not suffer from the sampling error-induced biases that affect the variances and covariances at the individual level discussed in Section IV and the Online Appendix.

38. Because workers can change occupation within one of our sample intervals, occupation is not a fixed worker characteristic and the decomposition in equation (7) is not exact. In our samples, however, the residual component is very small.

39. The IEB has a changing set of industry codes. We develop a crosswalk by comparing the industry codes assigned to the same establishment in adjacent years under the different coding systems. To simplify the crosswalk we use a two-digit level of classification, with 96 categories.

TABLE VI
CONTRIBUTION OF PERSON AND ESTABLISHMENT EFFECTS TO WAGE VARIATION ACROSS OCCUPATIONS AND INDUSTRIES

	(1) Interval 1 1985-1991	(2) Interval 2 1990-1996	(3) Interval 3 1996-2002	(4) Interval 4 2002-2009	(5) Change in variance (Int. 1 to Int. 4)*	(6) Share
Panel A: Between occupations (342 three-digit occupations)						
Std. dev. of mean log wages	0.233	0.243	0.263	0.289	0.029	100
Std. dev. of mean person effects	0.186	0.203	0.198	0.207	0.008	28
Std. dev. of mean estbl. effects	0.101	0.104	0.124	0.135	0.008	28
Correlation of mean person effects and establ. effects	0.110	0.171	0.238	0.291	0.012	42
Panel B: Between industries (96 two-digit industries)						
Std. dev. of mean log wages	0.173	0.184	0.203	0.224	0.020	100
Std. dev. of mean person effects	0.103	0.114	0.128	0.140	0.009	44
Std. dev. of mean estbl. effects	0.104	0.110	0.108	0.121	0.004	19
Correlation of mean person effects and establ. effects	0.242	0.301	0.422	0.403	0.008	42

Notes: Decompositions based on estimated AKM models summarized in Table III. Occupation is based on main job in each year, establishments are assigned one industry per interval, using consistently-coded two-digit industry.

*Entry in column (5) represents change in variance or covariance component. Entry in column (6) is the share of the total change in variance explained. Shares do not add to 100% because Xb component and its covariances are omitted.

which industry-specific wage premia are attributable to unobserved differences in worker quality (Murphy and Topel 1990; Gibbons and Katz 1992; Goux and Maurin 1999; Gibbons et al. 2005) versus firm-specific pay policies like efficiency wages. Our additive effects framework suggests that both components are important. In the 1985–1991 interval, for example, variation in mean worker effects explains about 35% of between-industry wage variation, variation in establishment effects explains a similar share, and their covariance adds another 20%.

Over the 1985–2009 period, the inequality in average wages across industries has risen substantially: the standard deviation in mean wages, for example, rose by 30% from interval 1 to interval 4. The entries in column (5) of the table suggest that rising dispersion in worker quality explains a sizable share (about 44%) of this rise, and rising dispersion in establishment-specific pay premiums contributes another 19%. As with the between-occupation wage structure, however, a relatively large share (42%) is due to the increasing sorting of high-wage workers to industries that pay a higher average wage premium to all workers.

VIII. RISING ESTABLISHMENT HETEROGENEITY: COHORT EFFECTS AND COLLECTIVE BARGAINING STATUS

The increasing dispersion in establishment-level pay premiums between the first and last intervals of our sample raises the question of how this increase occurred. Was it generated by a divergence in the pay premiums offered by continuing establishments, by a change in the policies of newly created establishments, or by a combination of the two? To address this question, we calculated the standard deviations of the estimated establishment effects in our four sample intervals by birth year of the establishment. The results are plotted in Figure IX. Note that we have up to four estimates of the dispersion of establishment effects for a given “birth” cohort, depending on when the birth occurred. For establishments that first appear in 1987, for example, we have one estimate based on 1985–1991 data, and three others based on data from the three later intervals. For establishments born in the final years of our sample we have only one estimate, based on data from our fourth interval (2002–2009).

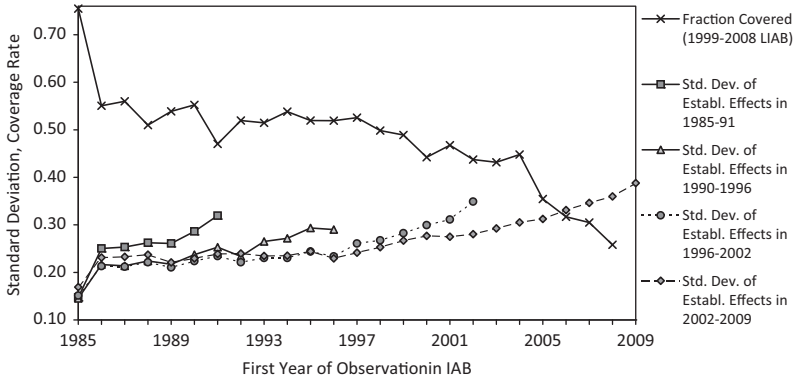


FIGURE IX

Standard Deviation of Establishment Effects and Fraction Covered by Collective Agreements, by Birth Year of Establishment

Figure shows standard deviation of estimated establishment effects in a given observation interval (1985–1991, 1990–1996, 1996–2002, or 2002–2009) for establishments that are present in that interval and first appeared in the IEB data in the “birth year” indicated on the horizontal axis. Figure also shows fraction of establishments in a given birth year surveyed in the 1999–2008 LIAB that are covered by collective agreements.

The pattern of the estimated standard deviations in Figure IX suggests that there is a life cycle pattern in the measured heterogeneity of firms. The distribution of establishment effects is relatively wide for new establishments but tends to narrow and then stabilize over time.⁴⁰ Among continuing establishments there is not much rise in the dispersion of firm effects between interval 1 and interval 4. For example, among the large set of establishments that are present in 1985, the standard deviation of estimated effects only rises from 0.15 in interval 1 to 0.17 in interval 4. In contrast, the standard deviation in estimated effects for all workplaces rises from 0.16 to 0.23 (see Table IV). We conclude that much of the rising heterogeneity in establishments is attributable to new establishments, particularly those that emerge after 1996. Adjusting for life cycle effects,

40. The earliest estimate of the dispersion in establishment effects is particularly wide for plants born in the last years of an interval. We suspect that this is mainly due to the higher sampling errors for the estimated effects of establishments that are only observed in a few years.

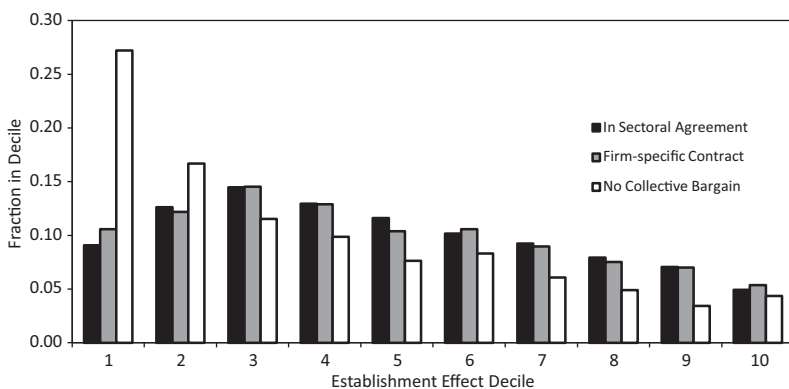


FIGURE X

Distribution of Establishment Effects by Collective Bargaining Status, Based on Establishment Effects for 1996–2002 and Bargaining Status in 2000 Wave of LIAB

Figure shows distribution of collective bargaining coverage status (no collective bargain, covered by firm-specific agreement, or covered by sectoral agreement) for 7,080 establishments in 2000 wave of LIAB that can be linked to IEB data. Establishments are classified into deciles of their estimated establishment effects from AKM model fit to 1996–2002 data.

establishments born in the late 2000s have about 25% higher standard deviations in their establishment effects than those born before 1996.

One potential explanation for the increasing dispersion of the wage premiums at new establishments is a rise in the fraction of plants that have opted out of the traditional collective bargaining system and pay relatively low wages. To investigate this explanation we merged collective bargaining status information from the IAB’s Linked Employer Employee database (LIAB) to establishments in our analysis sample.⁴¹ Overall, the mean establishment effect for plants with no collective bargaining is about 8–10 percentage points lower than the mean for plants with either form of collective bargaining.⁴² Moreover, as shown in Figure X, the dispersion in estimated effects is higher for uncovered

41. See Alda, Bender, and Gartner (2005) for a description of the LIAB data base. The LIAB has about 13,000–14,000 establishments in the years after 2000, and a smaller sample in earlier years.

42. In a regression of the interval-3 establishment effect on dummies for a sectoral or plant-specific agreement measured in the 2000 LIAB, the coefficients are 0.10 (standard error=0.01) for a sectoral agreement and 0.10 (standard

establishments, with a substantial fraction of these plants paying wage premiums in the lowest two deciles of overall effects.⁴³

As shown by the top line in Figure IX, there is a strong cohort effect in the fraction of new plants that are covered by collective bargaining.⁴⁴ Among establishments that enter between 1986 and 1996, 50%–55% are covered by collective bargains. Among those entering after 2007, by comparison, fewer than 30% are covered. Interestingly, the trend in coverage seems to exhibit a turning point at about the same time (circa 1996) as the trend in the standard deviation of estimated establishment effects, suggesting that the trend toward increasing heterogeneity across newer plants may be linked to the relative fall in collective bargaining coverage. Of course, it is difficult to assign a causal role to collective bargaining, because firms in Germany can choose whether to adopt some form of collective bargaining. At a minimum, however, the evidence in Figures IX and X suggests a proximate role for declining collective bargaining coverage among establishments that have begun operation since the mid-1990s in the rise in establishment-level heterogeneity.

IX. CONCLUSION

West Germany has experienced substantial increases in wage inequality over the past 25 years. Observers have been divided over whether the rise is primarily attributable to supply and demand factors (including trade and technology) or to changes in labor market institutions (Dustmann, Ludsteck, and Schönberg 2009; Eichhorst 2012). Our analysis approaches this question from a different perspective, asking how much of the rise in inequality is due to rising variation in the component of individual pay that is fully portable across jobs, and how much is due to a rise in the variation in pay premiums offered by different

error = 0.01) for a plant-specific agreement. The coefficients are 0.08 and 0.09, respectively, when dummies are added for the birth cohort of the establishment.

43. We assigned decile cutoffs for the establishment effects so that 10% of person-year observations in our third sample interval (1996–2002) fall into each decile. Establishments in the LIAB are relatively large and on average have more positive establishment effects than the population as a whole.

44. To estimate coverage rates by birth cohort, we first estimate the coverage rate by birth year for each year of the LIAB from 1999 to 2008. We then take the average coverage rate across years for each birth cohort.

employers. We find that inequality has widened in both dimensions. Moreover, people who would tend to earn more at any job are increasingly concentrated at establishments that offer above-average wages for all employees, magnifying the effects on overall inequality. In contrast, we find that the dispersion in the worker-specific job match component of wages is relatively small and stable over time.

A key question is whether similar trends have occurred in other developed economies—particularly those with significant increases in wage inequality—or will occur in the future. Existing work by Barth et al. (2011) suggests that workplace heterogeneity may in fact be an important part of recent rises in wage inequality in the United States. It will be of interest to see whether recent reforms throughout Western Europe lead to the same kinds of trends witnessed in West Germany since the mid-1990s.

Another unresolved issue is the source of rising workplace heterogeneity. Descriptively, we find that the distribution of establishment wage premiums varies substantially by firm cohort, with newer firms exhibiting greater dispersion. This could reflect differences in technology choices or management practices of younger versus older firms (Bloom and Van Reenen 2007), institutional constraints on the pay practices of older firms, or a variety of other factors. In Card, Heining, and Kline (2012) we show that establishments offering higher wage premiums have higher survival rates, suggesting that the wage premiums are related to firm profitability. Productivity varies enormously across firms and plants (e.g., Bernard et al. 2003; Foster, Haltiwanger, and Syverson 2008; Hsieh and Klenow 2009), and some share of these differences may be captured by workers through rent-sharing. To explain a rise in workplace heterogeneity, however, requires either a widening of productivity differences over time or a rise in dispersion of the share of the rent that workers capture at different firms. Developing and testing new models of wage determination that acknowledge the importance of workplace-specific wage premiums is a high priority for future research.

DEPARTMENT OF ECONOMICS, UC BERKELEY
INSTITUTE FOR EMPLOYMENT RESEARCH (IAB), GERMANY
DEPARTMENT OF ECONOMICS, UC BERKELEY

SUPPLEMENTARY MATERIAL

An Online Appendix for this article can be found at QJE online (qje.oxfordjournals.org).

REFERENCES

- Abowd, John, Robert Creedy, and Francis Kramarz, "Computing Person and Firm Effects Using Linked Longitudinal Employer-Employee Data," Cornell University Department of Economics Unpublished Working Paper, March 2002.
- Abowd, John, Francis Kramarz, and David Margolis, "High Wage Workers and High Wage Firms," *Econometrica*, 67, no. 2 (1999), 251–333.
- Acemoglu, Daron, and David Autor, "Skills, Tasks, and Technologies: Implications for Employment and Earnings," in *Handbook of Labor Economics*, vol. 4, Part B, Orley Ashenfelter and David Card, eds. (Amsterdam: Elsevier North Holland, 2011), 1043–1171.
- Alda, Holger, Stefan Bender, and Hermann Gartner, "The Linked Employer-employee Dataset Created from the IAB Establishment Panel and the Process-Produced Data of the IAB (LIAB)," *Schmollers Jahrbuch*, 125, no. 2 (2005), 327–336.
- Andersson, Fredrik, Elizabeth Davis, Julia Lane, Brian McCall, and Kristin Sandusky, "Decomposing the Sources of Earnings Inequality: Assessing the Role of Reallocation," *Industrial Relations*, 51, no. 4 (2012), 779–810.
- Andrews, Martyn J., Leonard Gill, Thorsten Schank, and Richard Upward, "High Wage Workers and Low Wage Firms: Negative Assortative Matching or Limited Mobility Bias?," *Journal of the Royal Statistical Society*, 171, no. 3 (2008), 673–679.
- Antonczyk, Dirk, Bernd Fitzenberger, and Katrin Sommerfeld, "Rising Wage Inequality, the Decline of Collective Bargaining, and the Gender Wage Gap," Department of Economics University of Freiburg Working Paper, April 2010.
- Ashenfelter, Orley C., "Estimating the Effect of Training Programs on Earnings," *Review of Economics and Statistics*, 60, no. 1 (1978), 47–57.
- Autor, David H., Lawrence H. Katz, and Melissa S. Kearney, "Trends in U.S. Wage Inequality: Revising the Revisionists," *Review of Economics and Statistics*, 90, no. 2 (2008), 300–323.
- Autor, David H., Frank Levy, and Richard J. Murnane, "The Skill Content of Recent Technological Change: An Empirical Exploration," *Quarterly Journal of Economics*, 118, no. 4 (2003), 1279–1334.
- Bagger, Jesper, Kenneth Sorensen, and Rune Vejelin, "Wage Sorting Trends," School of Economics and Management University of Aarhus Working Paper 17, 2011.
- Barth, Erling, Alex Bryson, James Davis, and Richard Freeman, "The Contribution of Dispersion across Plants to the Increase in US Earnings Dispersion," Institute for Social Research University of Oslo Working Paper, 2011.
- Bauer, Thomas, and Klaus F. Zimmermann, "Occupational Mobility of Ethnic Migrants," IZA Discussion Paper 58, 1992.
- Bernard, Andrew, Jonathan Eaton, Bradford Jensen, and Samuel Kortum, "Plants and Productivity in International Trade," *American Economic Review*, 93, no. 4 (2003), 1268–1290.
- Bernard, Andrew, and Bradford Jensen, "Exporters, Jobs, and Wages in US Manufacturing: 1976–87," *Brookings Papers on Economic Activity: Microeconomics* (1995), 67–112.
- Bloom, Nicholas, and John Van Reenen, "Measuring and Explaining Management Practices across Firms and Countries," *Quarterly Journal of Economics*, 122, no. 4 (2007), 1351–1408.

- Bound, John, and George Johnson, "Changes in the Structure of Wages in the 1980s: An Evaluation of Alternative Explanations," *American Economic Review*, 82, no. 3 (1992), 371–392.
- Burda, Michael, "The Determinants of East-West German Migration: Some First Results," *European Economic Review*, 37, nos. 2–3 (1993), 452–461.
- , "East-West German Wage Convergence after Reunification: Migration or Institutions?," Department of Economics Humboldt University Berlin Unpublished Working Paper, March 2000.
- Burda, Michael, and Jennifer Hunt, "What Explains the German Labor Market Miracle in the Great Recession?," *Brookings Papers on Economic Activity*, 42, no. 1 (2011), 273–335.
- Burdett, Kenneth, and Dale T. Mortensen, "Wage Differentials, Employer Size and Unemployment," *International Economic Review*, 39, no. 1 (1998), 257–273.
- Cahuc, Pierre, Fabien Postel-Vinay, and Jean-Marc Robin, "Wage Bargaining with On the Job Search: Theory and Evidence," *Econometrica*, 74, no. 2 (2006), 323–364.
- Card, David, Francesco Devicienti, and Agata Maida, "Rent-Sharing, Holdup, and Wages: Evidence from Matched Panel Data," NBER Working Paper 16192, 2010.
- Card, David, Jörg Heining, and Patrick Kline, "Workplace Heterogeneity and the Rise of West German Wage Inequality," NBER Working Paper 18522, 2012.
- Cardoso, Ana, "Workers or Employers: Who Is Shaping Wage Inequality?," *Oxford Bulletin of Economics and Statistics*, 59, no. 4 (1997), 523–547.
- , "Firms' Wage Policies and the Rise in Labor Market Inequality: The Case of Portugal," *Industrial and Labor Relations Review*, 53, no. 1 (1999), 87–102.
- Carlsson, Mikael, Julian Messina, and Oskar Nordström Skans, "Wage Adjustment and Productivity Shocks," Sveriges Riksbank working paper 253, 2011.
- Davis, Steven, and John Haltiwanger, "Wage Dispersion between and within U.S. Manufacturing Plants, 1963–86," NBER Working Paper 3722, 1991.
- Dorner, Matthias, Marion König, and Stefan Seth, "Sample of Integrated Labour Market Biographies—Regional File 1975–2008," IAB FDZ Datenreport 07/2011 EN, 2011.
- Dustmann, Christian, Johannes Ludsteck, and Uta Schönberg, "Revisiting the German Wage Structure," *Quarterly Journal of Economics*, 124, no. 2 (2009), 843–881.
- Eeckhout, Jan, and Philipp Kircher, "Identifying Sorting—In Theory," *Review of Economic Studies*, 78, no. 3 (2011), 872–906.
- Eichhorst, Werner, "The Unexpected Appearance of a New German Model," IZA Discussion Paper 6625, 2012.
- Eichhorst, Werner, and Paul Marx, "Reforming German Labor Market Institutions: A Dual Path to Flexibility," IZA Discussion Paper 4100, 2009.
- Ellguth, Peter, Hans-Dieter Gerner, and Jens Stegmaier, "Wage Bargaining in Germany: The Role of Works Councils and Opening Clauses," IAB Discussion Paper 5, 2012.
- European Industrial Relations Observatory (EIRO) "The Use of Hardship Clauses in East German Metalworking Industry," 1997a, available at: <http://www.eurofound.europa.eu/eiro/1997/03/feature/de9703205f.htm>.
- , "A Copernican U-turn in German Collective Bargaining?," 1997b, available at: <http://www.eurofound.europa.eu/eiro/1997/06/feature/de9706216f.htm>.
- Fitzenberger, Bernd, Karsten Kohn, and Alexander C. Lembcke, "Union Density and Varieties of Coverage: The Anatomy of Union Wage Effects," *The Industrial & Labor Relations Review*, 66, no. 1 (2013), 169–197.
- Foster, Lucia, John Haltiwanger, and Chad Syverson, "Reallocation, Firm Turnover, and Efficiency: Selection on Productivity or Profitability?," *American Economic Review*, 98, no. 1 (2008), 394–425.
- French, Eric, and Christopher Taber, "Identification of Models of the Labor Market," in *Handbook of Labor Economics*, vol. 4, Part A, Orley

- Ashenfelter and David Card, eds. (Amsterdam: Elsevier North Holland, 2011), 537–561.
- Gibbons, Robert, and Lawrence F. Katz, “Does Unmeasured Ability Explain Inter-industry Wage Differentials?,” *Review of Economic Studies*, 59, no. 3 (1992), 515–535.
- Gibbons, Robert, Lawrence F. Katz, Thomas Lemieux, and Daniel Parent, “Comparative Advantage, Learning, and Sectoral Wage Determination,” *Journal of Labor Economics*, 23, no. 4 (2005), 681–723.
- Glitz, Albrecht, “The Labor Market Impact of Immigration: A Quasi-Experiment Exploiting Immigrant Location Rules in Germany,” *Journal of Labor Economics*, 30, no. 1 (2012), 175–213.
- Goldin, Claudia, and Lawrence F. Katz *The Race between Education and Technology* (Cambridge, MA: Harvard University Press, 2008).
- Goux, Dominique, and Eric Maurin, “Persistence of Interindustry Wage Differentials: A Reexamination Using Matched Worker-Firm Panel Data,” *Journal of Labor Economics*, 17, no. 3 (1999), 492–533.
- Groschen, Erica, “Sources of Intra-Industry Wage Dispersion: How Much Do Employers Matter?,” *Quarterly Journal of Economics*, 106, no. 3 (1991), 869–884.
- Gruetter, Max, and Rachel Lalive, “The Importance of Firms in Wage Determination,” *Labour Economics*, 16, no. 2 (2009), 149–160.
- Hassel, Anke, and Britta Rehder, “Institutional Change in the German Wage Bargaining System—The Role of Big Companies,” MPIfG Working Paper 01/9, 2001.
- Heinbach, Wolf Dieter, “Bargained Wages in Decentralized Wage-Setting Regimes,” Institute for Applied Economic Research (IAW) Working Paper 276, 2006.
- Holzer, Harry T., Julia I. Lane, David B. Rosenblum, and Fredrik Andersson *Where Are All the Good Jobs Going?: What National and Local Job Quality and Dynamics Mean for U.S. Workers* New York: Russell Sage Foundation Press, 2011.
- Hsieh, Chang-Tai, and Peter J. Klenow, “Misallocation and Manufacturing TFP in China and India,” *Quarterly Journal of Economics*, 124, no. 4 (2009), 1403–1448.
- Jacobi, Lena, and Jochen Kluge, “Before and After the Hartz Reforms: The Performance of Active Labour Market Policy in Germany,” IZA Discussion Paper 2100, 2006.
- Juhn, Chinhui, Kevin Murphy, and Brooks Pierce, “Wage Inequality and the Rise in Returns to Skill,” *Journal of Political Economy*, 101, no. 3 (1993), 410–442.
- Jung, Sven, and Claus Schnabel, “Paying More than Necessary? The Wage Cushion in Germany,” IZA Discussion Paper 4278, 2009.
- Katz, Lawrence F., and David Autor, “Changes in the Wage Structure and Earnings Inequality,” in *Handbook of Labor Economics*, vol. 3, Part A, Orley Ashenfelter and David Card, eds., pp. 1463–1555.
- Katz, Lawrence F., and Kevin M. Murphy, “Changes in Relative Wages, 1963–87: Supply and Demand Factors,” *Quarterly Journal of Economics*, 107, no. 1 (1992), 35–78.
- Katz, Lawrence F., and Lawrence Summers, “Industry Rents: Evidence and Implications,” *Brookings Papers on Economic Activity: Microeconomics* (1989), 209–290.
- Kohaut, Susanne, and Peter Ellguth, “Neu gegründete Betriebe sind seltener tarifgebunden,” IAB Kurzbericht 16, 2008.
- Kremer, Michael, and Eric Maskin, “Wage Inequality and Segregation by Skill,” NBER Working Paper 5718, 1996.
- Krueger, Alan, and Lawrence Summers, “Efficiency Wages and the Inter-Industry Wage Structure,” *Econometrica*, 56, no. 2 (1988), 259–293.
- Lange, Fabian, “The Speed of Employer Learning,” *Journal of Labor Economics*, 25, no. 1 (2007), 1–35.
- Lentz, Rasmus, and Dale Mortensen, “Labor Market Models of Worker and Firm Heterogeneity,” *Annual Review of Economics*, 2 (2010), 577–602.
- Lopes de Melo, Rafael, “Sorting in the Labor Market: Theory and Measurement,” University of Chicago Department of Economics Working Paper, 2008.

- Mare, David C., and Dean R. Hyslop, "Worker-Firm Heterogeneity and Matching: An Analysis Using Worker and Firm Fixed Effects Estimated from LEED," Statistics New Zealand Working Paper, 2006.
- Mortensen, Dale T., and Christopher A. Pissarides, "Job Creation and Job Destruction in the Theory of Unemployment," *Review of Economic Studies*, 61, no. 3 (1994), 397–415.
- Moscarini, Giuseppe, and Fabien Postel-Vinay, "Stochastic Search Equilibrium," Department of Economics, Yale University, Working Paper, 2012.
- Murphy, Kevin M., and Robert H. Topel, "Efficiency Wages Reconsidered: Theory and Evidence," in *Advances in the Theory and Measurement of Unemployment*, Weiss, Yoram, and Topel, Robert H., eds. (New York: St. Martin's Press, 1990), 204–240.
- Oberschachtsiek, Dirk, Patrycja Scioch, Christian Seysen, and Jörg Heining, "Integrated Employment Biographies Sample IEBS: Handbook for the IEBS in the 2008 Version," No 200903_en, FDZ Datenreport, Institute for Employment Research, Nuremberg, Germany, 2009.
- Ochel, Wolfgang, "Decentralising Wage Bargaining in Germany—A Way to Increase Employment?," CESifo Working Paper 1069, 2003.
- Postel-Vinay, Fabien, and Jean-Marc Robin, "Equilibrium Wage Dispersion with Worker and Employer Heterogeneity," *Econometrica*, 70 (2002), 2295–2350.
- Rees, Albert, and George Schultz *Workers in an Urban Labor Market* (Chicago: University of Chicago Press, 1970).
- Riphahn, Regina T., and Daniel D. Schnitzlein, "Wage Mobility in East and West Germany," IZA Working Paper 6246, 2011.
- Roy, A. D., "Some Thoughts on the Distribution of Earnings," *Oxford Economic Papers*, 3, no. 2 (1951), 135–146.
- Schmieder, Johannes F., and Tanja Hethey, "Using Worker Flows in the Analysis of Establishment Turnover: Evidence from German Administrative Data," FDZ Methodenreport 06/2010, Institute for Employment Research, 2010.
- Siebert, Horst, "Labor Market Rigidities: At the Root of Unemployment in Europe," *Journal of Economic Perspectives*, 11, no. 3 (1997), 37–54.
- Skans, Oskar Nordström, Per-Anders Edin, and Bertil Holmlund, "Wage Dispersion between and within Plants: Sweden 1985–2000," in *The Structure of Wages: An International Comparison*, Lazear, Edward P., and Shaw, Kathryn L., eds. (Chicago: University of Chicago Press, 2009), 217–260.
- Slichter, Sumner, "Notes on the Structure of Wages," *Review of Economics and Statistics*, 32, no. 1 (1950), 80–91.
- Theil, Henri, and Anthony Finezza, "A Note on the Measurement of Racial Integration of Schools by Means of Informational Concepts," *Journal of Mathematical Sociology*, 1, no. 1 (1971), 187–194.
- Van Reenen, John, "The Creation and Capture of Rents: Wages and Innovation in a Panel of U.K. Companies," *Quarterly Journal of Economics*, 111, no. 1 (1996), 195–226.
- Wolff, Sascha, "Determinants of East-West-Migration in Germany: A Macroeconometric Analysis," Department of Economics Georg-August-Universität Göttingen Working Paper, 2009.